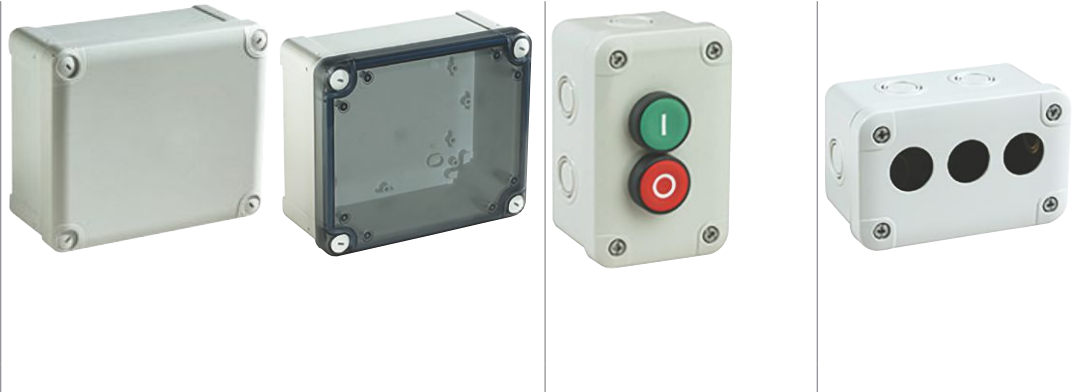




Class II



Characteristics	Universal boxes with IP66	Equipped button boxes, in ABS with IP54	ABS boxes for buttons, to be equipped
	Boxes that can be coupled (exactly the same dimensions) with kit ref. <b>13934</b> . Locks from box size of 116 x 116 x 62 mm: <ul style="list-style-type: none"> <li>• cover locking by 4 plastic captive screws with coarse thread outside the sealed area,</li> <li>• plumbable lock.</li> </ul> Locks from box size of 138 x 93 x 72 mm: <ul style="list-style-type: none"> <li>• the standard screws (flat screwdriver) can be replaced with other standardised screws.</li> </ul> The 4 reinforced edges of the cover help ensure its robustness and perfect support during customisation operations. Adaptable hinges on all the 20 and 40 mm covers.		
<b>Material</b>	ABS boxes: <ul style="list-style-type: none"> <li>• transparent cover made of polycarbonate</li> <li>• glow wire resistance: 650°C according to IEC 60695-2-11</li> <li>• usage temperature: -25°C...+60°C</li> <li>• installation temperature: -15°C...+40°C</li> </ul> Polycarbonate boxes: <ul style="list-style-type: none"> <li>• glow wire resistance: 960°C</li> <li>• usage temperature: -25°C...+80°C</li> <li>• installation temperature: -15°C...+60°C</li> </ul>		ABS boxes: <ul style="list-style-type: none"> <li>• glow wire resistance: 650°C according to IEC 60695-2-11</li> <li>• usage temperature: -25°C...+60°C</li> <li>• installation temperature: -15°C...+40°C</li> </ul>
<b>Colour</b>	<ul style="list-style-type: none"> <li>• Body: RAL 7035 grey</li> <li>• Cover: RAL 7035 grey or transparent</li> </ul>		
<b>Ingress protection rating</b>	IP66 according to IEC 60529	IP54 according to IEC 60529	-
<b>Mechanical protection rating</b>	ABS: IK07 according to IEC 62262 Polycarbonate: IK08 according to IEC 62262		ABS: IK07 according to IEC 62262
<b>Standards</b>	IEC 62208		
<b>Certifications</b>	<ul style="list-style-type: none"> <li>• IEC 62208 certified by TÜV</li> <li>• UL 508A: Polycarbonate range</li> <li>• Product Environmental Profile</li> <li>• Class II according to IEC 61140</li> </ul> Polycarbonate range: <ul style="list-style-type: none"> <li>• NEMA 4.4X according to NEMA 250</li> <li>• self-extinguishing: UL 94 V-0</li> </ul>		<ul style="list-style-type: none"> <li>• IEC 62208 certified by TÜV</li> <li>• Product Environmental Profile</li> <li>• Class II according to IEC 61140</li> </ul>
<b>Installation</b>	Fixing the box: <ul style="list-style-type: none"> <li>• Outside the sealed sensitive volume by the 4 chimneys in the corners from box size of 138 x 93 x 72 mm</li> <li>• Through the rear of the box by 2 or 4 elongated holes to be perforated</li> <li>• With fixing lugs from box size of 116 x 116 x 62 mm (ref. <b>NSYAEFTB</b>)</li> </ul> Outdoor installation, only for polycarbonate range: Compliant with IEC 62208 regarding type tests specified in §9.12 (resistance to ultra-violet (UV) radiation) and §9.13 (resistance to corrosion). Equipment installation: <ul style="list-style-type: none"> <li>• Studs for fixing the equipment in the body and the cover of the box by means of a Ø 4 mm self-tapping screw (ref. <b>NSYAMFSTB</b>, screw Ø 4 x 10 mm with Pozidriv and slotted head)</li> <li>• Option of installing rails, plates or other types of supports (card, etc.)</li> <li>• Spacers and stand-offs to be installed on the studs, for adjusting the height of the equipment</li> </ul>		



**Comment:**

For external use and based on the configuration of the installation, a canopy must be installed on the upper side of the boxes or the boxes should be installed under a shelter to protect them against the different weather conditions and to avoid water stagnation between body and lid. Anti-condensation valves must be installed to help prevent condensation and deformations of the boxes.



**Comment:**  
Dimensions, see [page 170](#)

Overall external dimensions			Overall internal dimensions			Body (mm)	Cover (mm)	Minor pack.	Cover screw	Universal boxes with IP66			
Height (mm)	Width (mm)	Depth (mm)	Height (mm)	Width (mm)	Depth (mm)					ABS IP66 IK07	PC-UL IP66 IK08	Opaque cover	Transparent cover
74	74	54	65	65	47	37	10	5	Metal	NSYTBS775	-	NSYTBP775	-
89	89	54	80	80	47	37	10	5	Metal	NSYTBS885	-	NSYTBP885	-
116	74	62	105	65	55	45	10	5	Metal	NSYTBS1176	-	NSYTBP1176	-
116	74	94	105	65	85	45	40	3	Metal	NSYTBS1179H	-	-	-
116	116	62	105	105	55	45	10	5	Plastic	NSYTBS11116	-	NSYTBP11116	-
138	116	133	105	105	125	45	80	2	Plastic	NSYTBS111113H	-	-	-
164	93	72	125	80	65	45	20	2	Plastic	NSYTBS1397	NSYTBS1397T	NSYTBP1397	NSYTBP1397T
192	121	87	150	105	80	60	20	2	Plastic	NSYTBS16128	NSYTBS16128T	NSYTBP16128	NSYTBP16128T
192	121	87	175	105	80	60	20	2	Plastic	NSYTBS19128	NSYTBS19128T	NSYTBP19128	NSYTBP19128T
192	121	105	175	105	100	60	40	2	Plastic	NSYTBS191210H	NSYTBS191210HT	NSYTBP191210H	NSYTBP191210HT
192	164	87	175	150	80	60	20	1	Plastic	NSYTBS19168	NSYTBS19168T	NSYTBP19168	NSYTBP19168T
192	164	105	175	150	100	60	40	1	Plastic	NSYTBS191610H	NSYTBS191610HT	NSYTBP191610H	NSYTBP191610HT
241	194	87	225	175	80	60	20	1	Plastic	NSYTBS24198	NSYTBS24198T	NSYTBP24198	NSYTBP24198T
241	194	107	225	175	100	80	20	1	Plastic	NSYTBS241910	NSYTBS241910T	NSYTBP241910	NSYTBP241910T
241	194	107	225	175	100	60	40	1	Plastic	NSYTBS241910H	NSYTBS241910HT	NSYTBP241910H	NSYTBP241910HT
241	194	127	225	175	120	80	40	1	Plastic	NSYTBS241912H	NSYTBS241912HT	NSYTBP241912H	NSYTBP241912HT
291	241	88	275	225	80	60	20	1	Plastic	NSYTBS29248	NSYTBS29248T	NSYTBP29248	NSYTBP29248T
291	241	128	275	225	120	100	20	1	Plastic	NSYTBS292412	NSYTBS292412T	NSYTBP292412	NSYTBP292412T
291	241	128	275	225	120	60	60	1	Plastic	NSYTBS292412H	NSYTBS292412HT	NSYTBP292412H	NSYTBP292412HT
291	241	168	275	225	160	100	60	1	Plastic	NSYTBS292416H	NSYTBS292416HT	NSYTBP292416H	NSYTBP292416HT
341	291	128	325	275	120	100	20	1	Plastic	NSYTBS342912	NSYTBS342912T	NSYTBP342912	NSYTBP342912T
341	291	168	325	275	160	100	60	1	Plastic	NSYTBS342916H	NSYTBS342916HT	NSYTBP342916H	NSYTBP342916HT



Opaque cover      Transparent cover      Opaque cover      Transparent cover

7

## Mounting plates made to adapt to all usage scenarios

### Installation:

- Fixing by means of Ø 4 mm self-tapping screws, Pozidrive and slotted head, ref. **NSYAMFSTB**
- To raise the plate, use the stand-offs ref. **NSYAMFET154TB**, **NSYAMFET204TB**, **NSYAMFET304TB** and the screw **NSYAMFESTB**

### Supply:

Plates supplied without screws

Box Height (mm)	Box Width (mm)	Mounting plate dimensions		Minor pack.	Mounting plates	
		A (mm)	B (mm)		Material:	Material:
192	164	168.5	140	1		
241	194	215	168.5	1	Material: Galvanised steel	Material: Insulating polyester plate reinforced with fibreglass, halogen-free: Glow wire resistance 750°C according to IEC 60695-2-11.
291	241	265	215	1	Thickness: 15/10° mm	Thickness: 25/10° mm
341	291	315	265	1	References	References
					NSYAMP1916TB	NSYAMPA1916TB
					NSYAMP2419TB	NSYAMPA2419TB
					NSYAMP2924TB	NSYAMPA2924TB
					NSYAMP3429TB	NSYAMPA3429TB





## Button description

- Emergency switching off function with a red, Ø 40 mm, "turn to unlock" palm button.
  - Start / Stop function with 2 push buttons.
  - Up / Down / Stop function with 3 push buttons.
- Ref. **XALEK1702** houses an emergency switching off palm button with mechanical locking according to standards IEC 60364-5-53 and 60947-5-5.

## Technical features of the switches:

- "NC" switch with positive opening manoeuvre according to IEC 60947-5-1 appendix K,
- mechanical durability of the emergency switch: 0.1 million cycles,
- mechanical durability of the "NC" and "NO" switches: 5 million cycles,
- protection against short circuits: 10 A.

**Comment:**  
Dimensions, see [page 170](#)

Boxes equipped with IP54 ABS buttons		ABS button boxes, to be equipped	
			
Height (mm)	Width (mm)	Depth (mm)	References
74	74	83	<b>XALEK170</b>
116	74	62	-
116	74	62	<b>XALE2</b>
116	74	75	<b>XALE3</b>
116	74	75	-

Overall external dimensions			Overall internal dimensions			Body (mm)	Cover (mm)	Minor pack.	No. of holes	Function	References
Height (mm)	Width (mm)	Depth (mm)	Height (mm)	Width (mm)	Depth (mm)						
74	74	83	-	-	-	-	-	1	-	Emergency switching off	<b>XALEK170</b>
116	74	62	105	65	55	45	10, Grey	5	2	-	<b>XALE2</b>
116	74	62	105	65	55	45	10, Grey	5	3	-	<b>XALE3</b>
116	74	75	-	-	-	-	-	1	-	Start / stop	<b>XALE2141</b>
116	74	75	-	-	-	-	-	1	-	Up / down / stop	<b>XALE3255</b>

Function	Type of push	Type NO
Emergency switching off	Latching, red	1
<b>Start/stop</b>		
Start	Flush, green	1
Stop	Projecting, red	-
<b>Up / down / stop</b>		
Up	Flush, black	-
Down	Flush, white	-
Stop	Projecting, red	-

Function	Type of push	Type NC
Emergency switching off	Latching, red	1
<b>Start/stop</b>		
Start	Flush, green	-
Stop	Projecting, red	1
<b>Up / down / stop</b>		
Up	Flush, black	-
Down	Flush, white	-
Stop	Projecting, red	1

Function	Type of push	Type C / O
Emergency switching off	Latching, red	-
<b>Start/stop</b>		
Start	Flush, green	-
Stop	Projecting, red	-
<b>Up / down / stop</b>		
Up	Flush, black	1
Down	Flush, white	1
Stop	Projecting, red	-

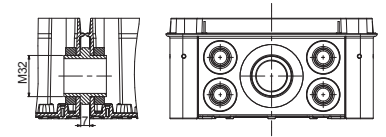
## Coupling kit



13934

The coupling kit allows you to join several boxes with dimensions from 138 x 93 mm.

- Material: Polystyrene, glow wire resistance: 650°C according to IEC 60695-2-11
- Ingress protection rating: IP66 according to IEC 60529
- Installation: The kit is installed by drilling a hole with Ø 32 mm in the boxes to be coupled



**Supply:**  
The kit consists of 2 linking parts, nuts and seals

Characteristics	Drilling Ø	Minor pack.	Reference
Coupling kit	32 mm	1	13934

## Sealed anti-condensation valve



NSYACAG12LPH1

Controls the pressure to avoid condensation and/or deformations of the boxes due to the internal temperature increase. Applications Protection of equipment for luminaires, industrial control, transportation, pumps, etc.

- Material: PA6-V2, acrylic co-polymer membrane, water and oil repellent
- Ingress protection rating: IP68
- Installation: The valve is installed by drilling a hole with Ø 12 mm in the box
- Usage temperature: -40...+105°C
- Permeability: Air flow under  $\Delta P = 0.7$  bar
- Pressure difference: Condition for IP68

**Supply:**  
10 valves, nuts and seals

Characteristics	Permeability	Pressure difference	Drilling Ø	Minor pack.	Reference
Sealed anti-condensation valve IP68	16 litres/h	$\Delta P < 1$ bar	12 mm	1	NSYACAG12LPH1
Sealed anti-condensation valve IP68	120 litres/h	$\Delta P < 0.1$ bar	12 mm	1	NSYACAG12LPH2

## Cover accessories Set

7



NSYAEDST820TB

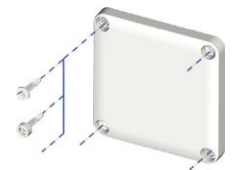


NSYAEDSB320TB



NSYAEDS20TB

- The Thalassa boxes are delivered as standard with slotted-head screws for flat screwdrivers from 4 to 5.5 mm.
- With box sizes from 138 x 93 x 72 mm, these screws can be replaced for screws with different standardised heads, to comply with most cases.
- After removing the standard screw, simply position the new screw by pressing on it.
- The adapter clips (intermediate parts for tightening the cover on the body of the box) are the same as those for the standard screws. They are not delivered with the shape screws.
- A single key for opening the boxes as well as the other enclosures of your installation.



**Supply:**  
Set of 4 shape screws

Characteristics	Minor pack.	Reference
Triangle screw Ø8 mm, for Thalassa boxes, Height of the lid 20 mm	1	NSYAEDST820TB
Double bar screw Ø5 mm, for Thalassa boxes, Height of the lid 20 mm	1	NSYAEDSB520TB
Spare standard plastic screw for Thalassa boxes, Height of the lid 20 mm	1	NSYAEDS20TB
Spare standard plastic screw for Thalassa boxes, Height of the lid 40 mm	1	NSYAEDS40TB
Spare standard plastic screw for Thalassa boxes, Height of the lid 60 mm	1	NSYAEDS60TB

## Cover accessories Pack

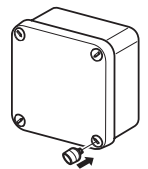


NSYAEDKTB

- The handle (or thumbwheel) allows the screws to be handled without any tools. It is ideally associated with a box equipped with hinges.
- It snaps onto the head of the standard plastic screw.

**Supply:**  
Pack of 4 handles

Characteristics	Minor pack.	Reference
Handles	1	NSYAEDKTB



## Terminal blocks

- The new Linergy TR terminal blocks have 3 types of connections: screw, spring or "push-in" and they can be mounted on a DIN rail.
- Available in grey, blue, orange, red, green, black or white color.

**Supply:**  
Minor pack. 50

### Terminal blocks Screw connection



NSYTRV22

Characteristics	H (mm)	W (mm)	D (mm)	Reference
Screw connection Passthrough, 2.5 mm <sup>2</sup> , grey	47.7	5.2	47.5	NSYTRV22
Screw connection Passthrough, 2.5 mm <sup>2</sup> , blue	47.7	5.2	47.5	NSYTRV22BL
Screw connection Protective earth, 2.5 mm <sup>2</sup>	47.7	5.2	47.5	NSYTRV22PE
Screw connection Passthrough, 4 mm <sup>2</sup> , grey	47.7	6.2	47.5	NSYTRV44
Screw connection Passthrough, 4 mm <sup>2</sup> , blue	47.7	6.2	47.5	NSYTRV44BL
Screw connection Protective earth, 4 mm <sup>2</sup>	47.7	6.2	47.5	NSYTRV44PE

### Terminal blocks Spring connection



NSYTRR22

Characteristics	H (mm)	W (mm)	D (mm)	Reference
Spring connection Passthrough, 2.5 mm <sup>2</sup> , grey	36.5	5.2	48.5	NSYTRR22
Spring connection Passthrough, 2.5 mm <sup>2</sup> , blue	36.5	5.2	48.5	NSYTRR22BL
Spring connection Protective earth, 2.5 mm <sup>2</sup>	36.5	5.2	48.5	NSYTRR22PE
Spring connection Passthrough, 4 mm <sup>2</sup> , grey	36.5	6.2	56	NSYTRR42
Spring connection Passthrough, 4 mm <sup>2</sup> , blue	36.5	6.2	56	NSYTRR42BL
Spring connection Protective earth, 4 mm <sup>2</sup>	36.5	6.2	56	NSYTRR42PE

### Terminal blocks "Push-in" connection



NSYTRP22

Characteristics	H (mm)	W (mm)	D (mm)	Reference
"Push-in" connection Passthrough, 2.5 mm <sup>2</sup> , grey	36.5	5.2	48.5	NSYTRP22
"Push-in" connection Passthrough, 2.5 mm <sup>2</sup> , blue	36.5	5.2	48.5	NSYTRP22BL
"Push-in" connection Protective earth, 2.5 mm <sup>2</sup>	36.5	5.2	48.5	NSYTRP22PE
"Push-in" connection Passthrough, 4 mm <sup>2</sup> , grey	36.5	6.2	56	NSYTRP42
"Push-in" connection Passthrough, 4 mm <sup>2</sup> , blue	36.5	6.2	56	NSYTRP42BL
"Push-in" connection Protective earth, 4 mm <sup>2</sup>	36.5	6.2	56	NSYTRP42PE

### 4-hole terminal blocks



IMT34003



IMT34005



IMT34007

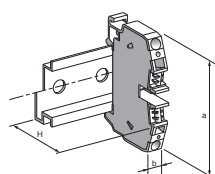
- The terminal-block support bar is particularly well suited to the thermoplastic boxes.
- Boxes with sizes from 192 x 116 mm can accommodate a terminal-block support bar of 12 x 2 mm.
- The screwing terminal blocks are easily clipped onto this bar.
- Terminal-block connection capacity: See the selection table below.
- 4-hole terminal block length (Lb): 30 mm.
- The earth terminal snap fits into boxes with dimensions of less than 116 x 116 mm.



**Supply:**  
Red (live) Minor pack. 10  
Blue (neutral) Minor pack. 5  
Green (earth) Minor pack. 5

Characteristics	Reference
4-hole terminal blocks 2 x 10 <sup>2</sup> + 2 x 16 <sup>2</sup> – Red (live)	IMT34003
Earth terminal block 2 x 252 – Red (live)	IMT34009
4-hole terminal blocks 2 x 10 <sup>2</sup> + 2 x 16 <sup>2</sup> – Blue (neutral)	IMT34005
4-hole terminal blocks 2 x 10 <sup>2</sup> + 2 x 16 <sup>2</sup> – Green (earth)	IMT34007

### Terminal-block support bar



IMT34000

- Discover our complete terminal blocks range in **LVED213001EN**.

**Supply:**  
Minor pack. 1

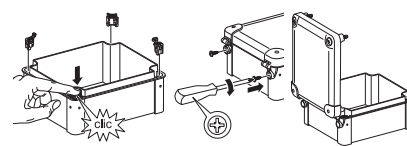
Characteristics	No. of Terminal blocks	Support length Ls (mm)	Height or width (mm)	Min.depth (mm)	Reference
Terminal-block support bar	4	140	192	87	IMT34000
Terminal-block support bar	6	185	241	87	IMT34001
Terminal-block support bar	8	235	291	128	IMT34002

## Hinges, Set of 2 hinges



NSYAEDH20TB

- The hinges can be adapted to all covers with a height of 20 and 40 mm with dimensions from 138 x 93 mm.
- The hinge allows the lid to open fully to 200°.
- Ingress protection rating: IP66 according to IEC 60529
- Installation: The hinge does not require any machining and is installed easily even with the box already equipped
- Maximum load: Hinged cover: 10 kg/m<sup>2</sup>



### Supply:

The hinges (2 per set) are delivered with the fixings, minor pack 1

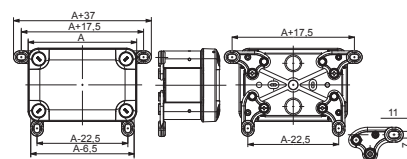
Characteristics	Height of the lid (mm)	References
Set of 2 hinges	20	<b>NSYAEDH20TB</b>
Set of 2 hinges	40	<b>NSYAEDH40TB</b>

## Hinges, Set of 4 fixing lugs



NSYAEFTB

- Plastic fixing lugs for installation on boxes with dimensions from 116 x 116 mm.
- Option of vertical or horizontal installation.
- Installation: Installation by a single screw at the last moment, with the box closed and equipped
- Maximum load: Body: 30 kg/m<sup>2</sup>, Cover: 10 kg/m<sup>2</sup>



### Supply:

4 lugs + screws, minor pack 1

Characteristics	Reference
Set of 4 fixing lugs	<b>NSYAEFTB</b>

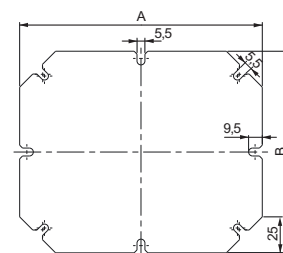
## Mounting plates

7

- Mounting plates made to adapt to all usage scenarios.
- Material: Galvanised steel
- Thickness: 15/10<sup>e</sup> mm
- Installation: Fixing by means of Ø 4 mm self-tapping screws, Pozidrive and slotted head, ref. **NSYAMFSTB**
- To raise the plate, use the stand-offs ref. **NSYAMFET154TB**, **NSYAMFET204TB**, **NSYAMFET304TB** and the screw **NSYAMFESTB**



NSYAMPM1916TB



### Supply:

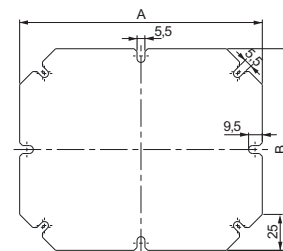
Plates supplied without screws

Characteristics	Box		Dimensions		Minor pack.	References
	Height (mm)	Width (mm)	A (mm)	B (mm)		
Mounting plate	192	164	168.5	140	1	<b>NSYAMPM1916TB</b>
Mounting plate	241	194	215	168.5	1	<b>NSYAMPM2419TB</b>
Mounting plate	291	241	265	215	1	<b>NSYAMPM2924TB</b>
Mounting plate	341	291	315	265	1	<b>NSYAMPM3429TB</b>

- Mounting plates made to adapt to all usage scenarios.
- Material: Insulating polyester plate reinforced with fibreglass, halogen-free: Glow wire resistance 750°C.
- Thickness: 25/10<sup>e</sup> mm
- Installation: Fixing by means of Ø 4 mm self-tapping screws, Pozidrive and slotted head, ref. **NSYAMFSTB**
- To raise the plate, use the stand-offs ref. **NSYAMFET154TB**, **NSYAMFET204TB**, **NSYAMFET304TB** and the screw **NSYAMFESTB**



NSYAMPA1916TB

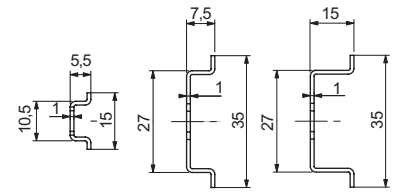


### Supply:

Plates supplied without screws

Characteristics	Box		Dimensions		Minor pack.	References
	Height (mm)	Width (mm)	A (mm)	B (mm)		
Insulating mounting plate	192	164	168.5	140	1	<b>NSYAMPA1916TB</b>
Insulating mounting plate	241	194	215	168.5	1	<b>NSYAMPA2419TB</b>
Insulating mounting plate	291	241	265	215	1	<b>NSYAMPA2924TB</b>
Insulating mounting plate	341	291	315	265	1	<b>NSYAMPA3429TB</b>

## Symmetric DIN rails



- A 15 x 5 mm rail is provided for the compact terminal blocks.
- To raise the rail, use stand-offs ref. **NSYAMFET154TB**, **NSYAMFET204TB**, **NSYAMFET304TB** and the screw **NSYAMFESTB**.
- Installation: Fixing of the rails with Ø 4 mm self-tapping screws, (not included), Pozidrive and slotted head, ref. **NSYAMFSTB**

**Supply:**  
Supplied without screws  
(except for the 15 x 5 mm rails)



NSYAMRD11155TB



NSYAMRD11357TB



NSYAMRD243515TB

Characteristics	Height (mm)	Depth (mm)	Length (mm)	Box (mm)	References
Symmetric DIN rail	15	5	97	105	<b>NSYAMRD11155TB</b>
Symmetric DIN rail	15	5	140	150	<b>NSYAMRD16155TB</b>
Symmetric DIN rail	15	5	168	175	<b>NSYAMRD19155TB</b>
Symmetric DIN rail	15	5	214	225	<b>NSYAMRD24155TB</b>
Symmetric DIN rail	15	5	264	275	<b>NSYAMRD29155TB</b>
Symmetric DIN rail	15	5	316	325	<b>NSYAMRD34155TB</b>
Symmetric DIN rail	35	7.5	97	105	<b>NSYAMRD11357TB</b>
Symmetric DIN rail	35	7.5	140	150	<b>NSYAMRD16357TB</b>
Symmetric DIN rail	35	7.5	168	175	<b>NSYAMRD19357TB</b>
Symmetric DIN rail	35	7.5	214	225	<b>NSYAMRD24357TB</b>
Symmetric DIN rail	35	7.5	264	275	<b>NSYAMRD29357TB</b>
Symmetric DIN rail	35	7.5	316	325	<b>NSYAMRD34357TB</b>
Symmetric DIN rail	35	15	214	225	<b>NSYAMRD243515TB</b>
Symmetric DIN rail	35	15	264	275	<b>NSYAMRD293515TB</b>
Symmetric DIN rail	35	15	316	325	<b>NSYAMRD343515TB</b>

## Screws for rails



NSYAMFSTB

- Ø 4 x 10 mm

**Supply:**  
Pack of 100 screws

Characteristics	References
Screws Ø4 mm, height 10 mm	<b>NSYAMFSTB</b>