



ROTA NCO

**Precision power lathe chuck
with long jaw stroke**

A true problem solver with both the longest jaw stroke and the highest jaw clamping force

The ROTA NCO is considered to be a problem solver par excellence on horizontal as well as vertical lathes. The long jaw stroke enables the lathe chuck to clamp over interfering contours of the workpiece. The special feature: Despite a long jaw stroke, the ROTA NCO generates a high clamping force, which means that clamping of these components is also process reliable.



Advantages – Your benefits

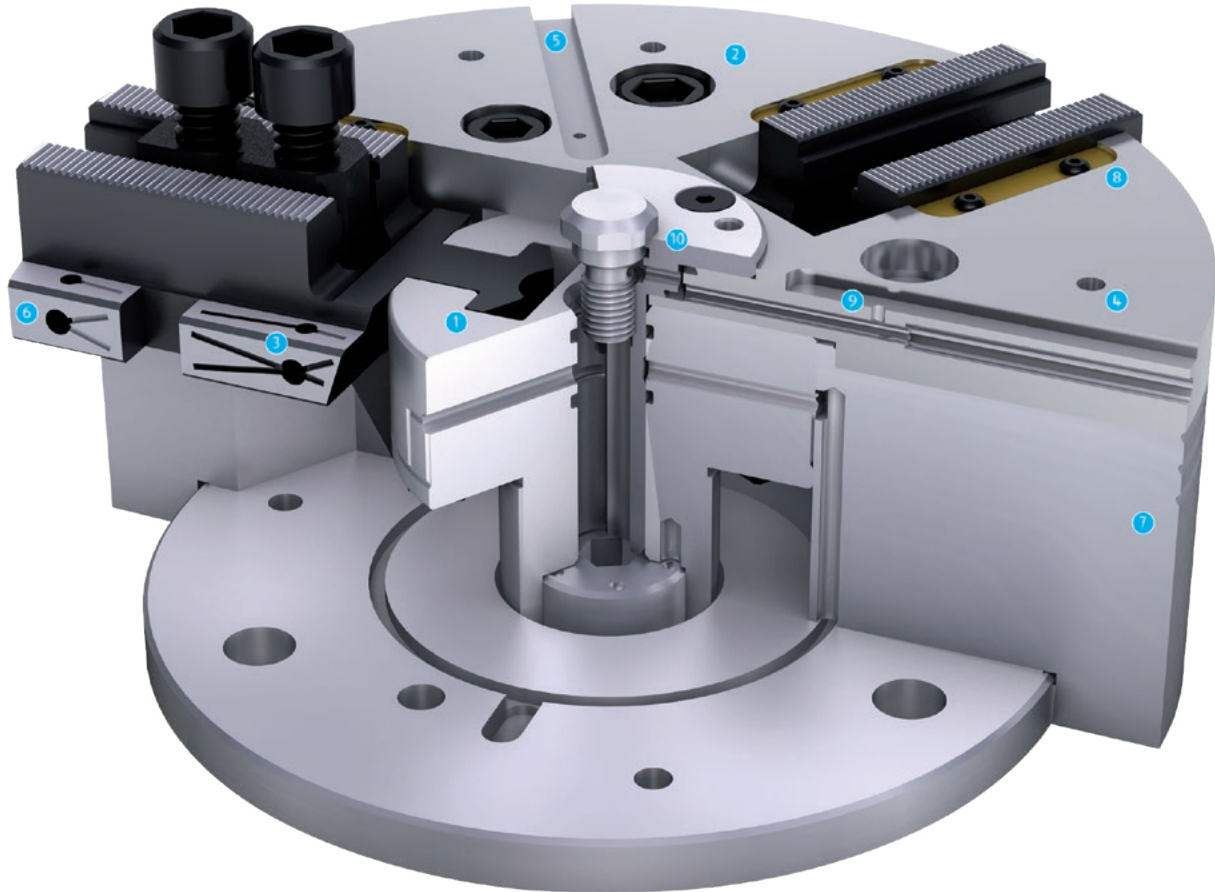
- + Precision wedge-hook power lathe chuck for highest quality requirements**
Allows excellent machining results
- + High efficiency of the wedge hook system**
Process-reliable clamping due to high clamping forces
- + Optimum jaw support for O.D. and I.D. clamping due to a very long base jaw guidance**
Allows high clamping forces at a long service life
- + Optimized lubrication system**
Consistently high clamping forces ensured
- + Longest jaw stroke at high jaw clamping force**
Reliable and variable clamping of workpieces over interfering contours
- + Sealed against coolant and chips as standard via wiper strips, seals and sealed through-hole**
Excellently suitable for the use on vertical lathes
- + Media feed-through (coolant or air) as standard option integrated in the chuck body**
Flexibility depending on the application
- + Low height design**
Maximum use of the machine room and maximum rigidity of the system
- + Base jaws with fine serration 1.5 mm x 60° and 1/16" x 90° as standard**
High flexibility in the range of top jaws
- + All sides of the functional parts are hardened and ground**
Ensures a long service life

Technical data

Description	Max. rotational speed [min ⁻¹]	Max. clamping force [kN]	Max. actuating force [kN]	Stroke/jaw [mm]	Piston stroke [mm]
ROTA NCO 165	6000	72	30	6.4	24
ROTA NCO 210	5000	95	42	9	27
ROTA NCO 260	4500	150	62	10	30
ROTA NCO 315	3600	190	90	13	40
ROTA NCO 400	2500	270	120	15	45
ROTA NCO 500	2000	330	140	15	45
ROTA NCO 630	1600	330	140	15	45

Function of ROTA NCO

The axially movable piston transfers the force to the base jaw and generates a radial jaw movement synchronized with the rotational axis.

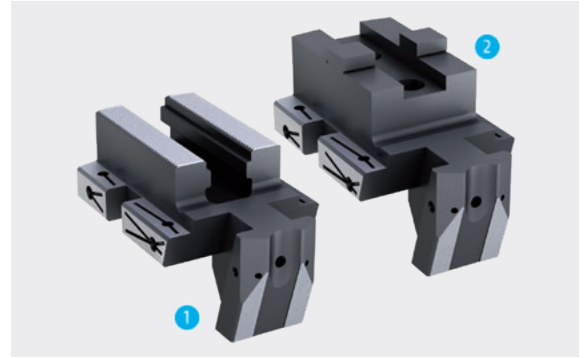


- 1 Wedge hook drive**
Offers constantly high clamping forces in operation
- 2 Hardened and extremely rigid base body**
Therefore a longer service life at highest precision.
Even with maximum clamping force
- 3 Optimized lubrication system**
For consistently high clamping forces
- 4 Mounting thread**
For workpiece stops or cover plates
- 5 Additional slot guidance on the chuck face**
For workpiece stops or cover plates
- 6 Long jaw guidance**
Offers optimal support for O.D.- and I.D. clamping
- 7 Low height design**
Expands your machine's workspace
- 8 Wiper strips**
Seal the base jaw guidances and offer a good protection against coolant and chips
- 9 Integrated air supply with mounting holes**
For mounting an air monitoring system
- 10 Central media supply**
Available on request for air control or coolant

Three standardized jaw interfaces available

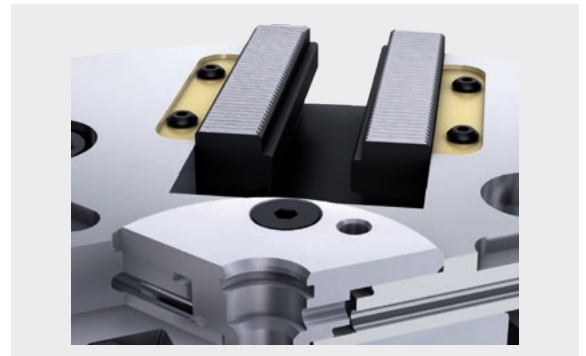
Select one standardized jaw interface from the 3 standardized versions and benefit from the fact that existing top jaws can also be used on the new SCHUNK lathe chuck.

- ① **Fine serration**
1/16" x 90°
3/32" x 90°
- ② **Metric tongue and groove**



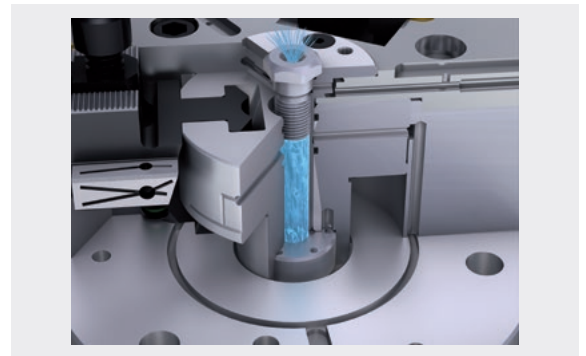
Adjustable brass wiper bars

Adjustable brass wiper bars seal the base jaws to give protection against coolant and chips.



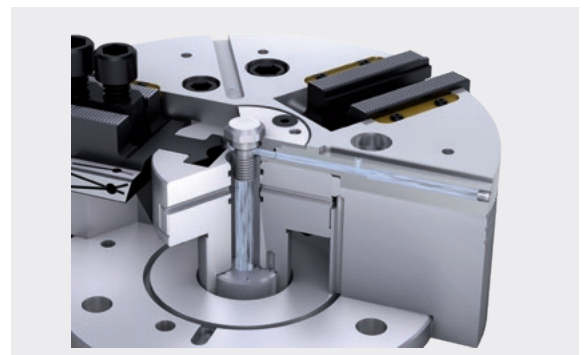
Modification coolant supply

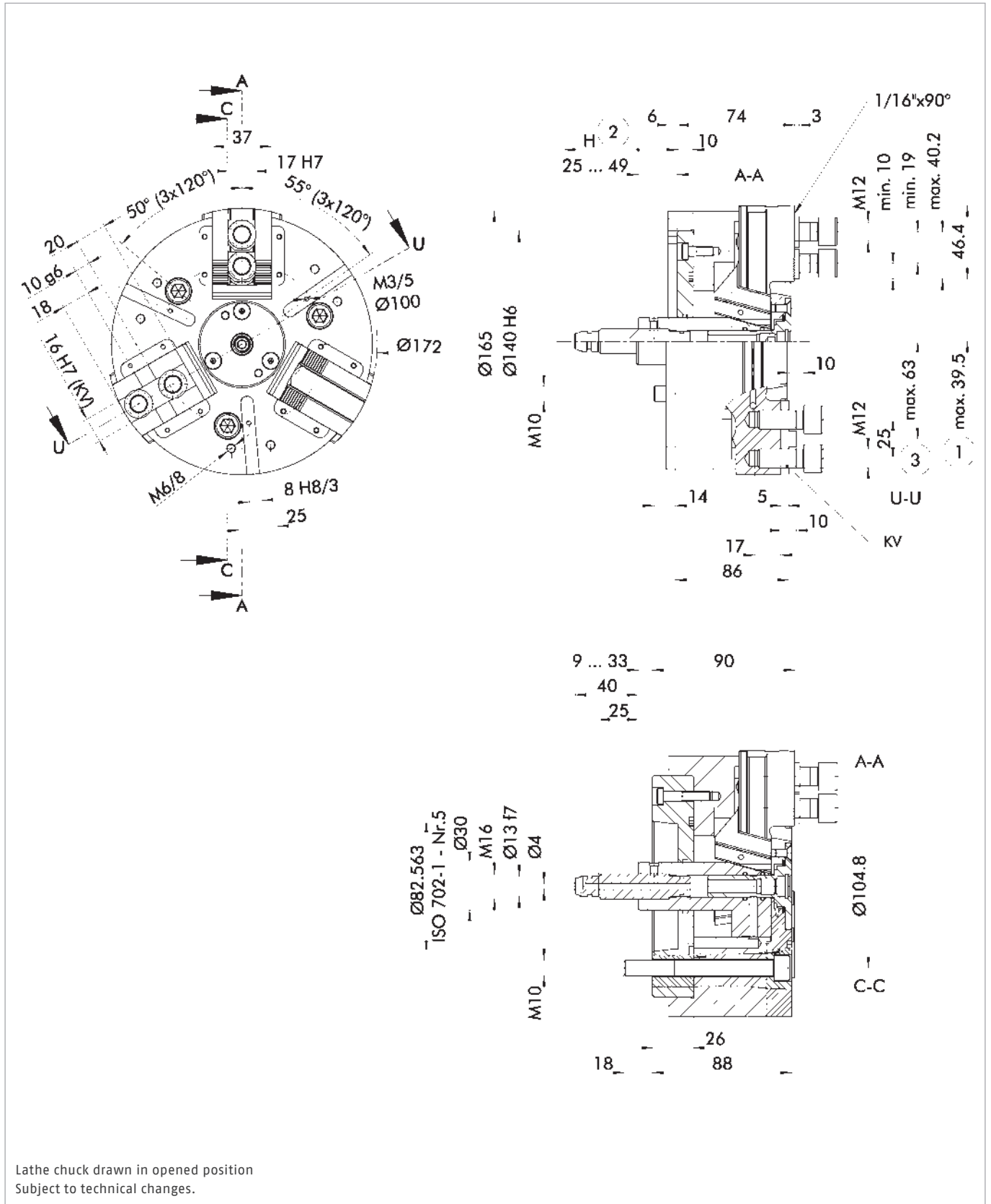
The lathes with integrated coolant supply via the spindle can be directly fed to the workpiece through the lathe chuck.



Modification air control

In automatable series production, air control can be used to check whether the workpiece is in contact and can be clamped securely.





- ① Distance to center of first tooth
- ② Piston stroke direction

- ③ Distance to center of tongue and groove

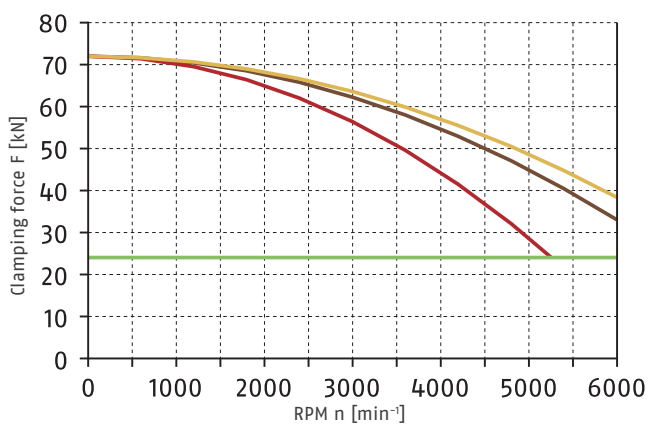
Technical data

Spindle type	Spindle size	ID	Serration	Max. rotational speed [min ⁻¹]	Max. clamping force [kN]	Max. actuating force [kN]	Stroke/jaw [mm]	Piston stroke (H) [mm]	Moment of inertia [kgm ²]	Weight [kg]
ISO 702-4	Nr. 5 (Z140)	0856000	1/16" x 90°	6000	72	30	6.4	24	0.04	11
ISO 702-1	Nr. 5	0856001	1/16" x 90°	6000	72	30	6.4	24	0.04	13
ISO 702-4	Nr. 5 (Z140)	0856002	Tongue and groove	6000	72	30	6.4	24	0.04	11
ISO 702-1	Nr. 5	0856003	Tongue and groove	6000	72	30	6.4	24	0.04	13

Scope of delivery

Chuck, T-nuts or mounting screws for top jaws, chuck mounting screws and operating manual

Clamping force-RPM-diagram



Required minimum clamping force F_{spmin} 33%

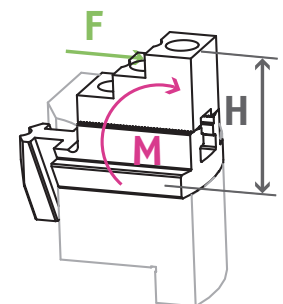
SHB 200
1.6 kg

SWB 160
3.1 kg

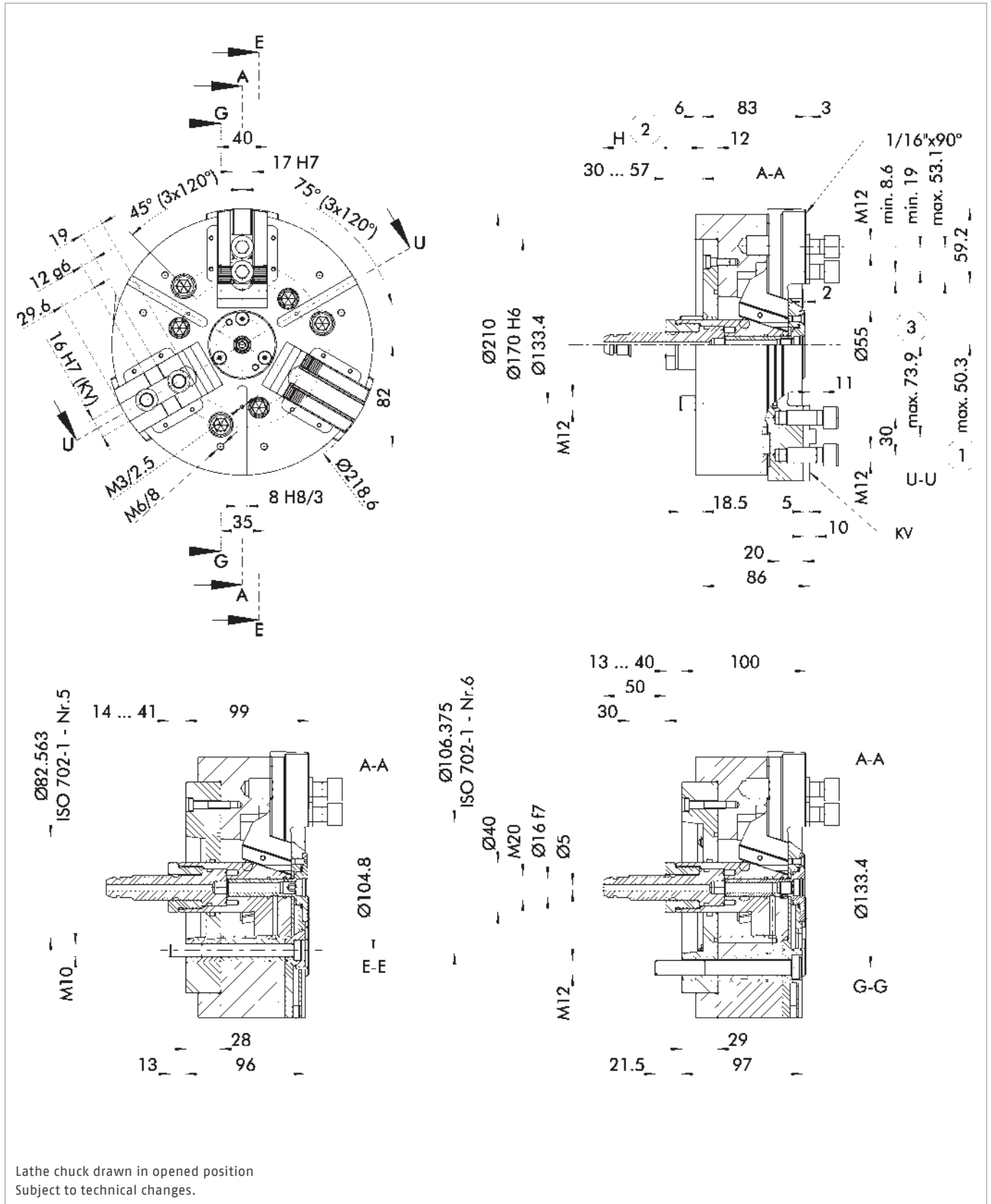
SWB-AL 160
1.09 kg



Load of base jaw guidance



$M_{max} = 1632 \text{ Nm}$



- ① Distance to center of first tooth
- ② Piston stroke direction

- ③ Distance to center of tongue and groove

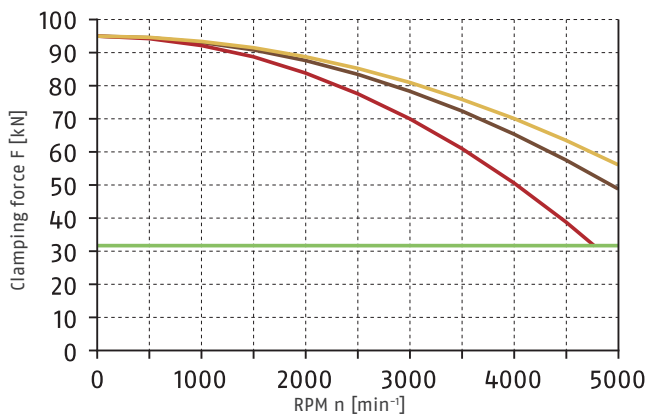
Technical data

Spindle type	Spindle size	ID	Serration	Max. rotational speed [min ⁻¹]	Max. clamping force [kN]	Max. actuating force [kN]	Stroke/jaw [mm]	Piston stroke (H) [mm]	Moment of inertia [kgm ²]	Weight [kg]
ISO 702-4	Nr. 6 (Z170)	0856010	1/16" x 90°	5000	95	42	9	27	0.11	21
ISO 702-1	Nr. 5	0856011	1/16" x 90°	5000	95	42	9	27	0.12	23
ISO 702-1	Nr. 6	0856012	1/16" x 90°	5000	95	42	9	27	0.12	23
ISO 702-4	Nr. 6 (Z170)	0856013	Tongue and groove	5000	95	42	9	27	0.11	21
ISO 702-1	Nr. 5	0856014	Tongue and groove	5000	95	42	9	27	0.12	23
ISO 702-1	Nr. 6	0856015	Tongue and groove	5000	95	42	9	27	0.12	23

Scope of delivery

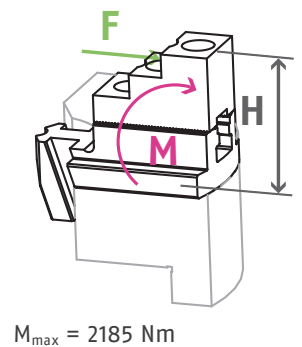
Chuck, T-nuts or mounting screws for top jaws, chuck mounting screws and operating manual

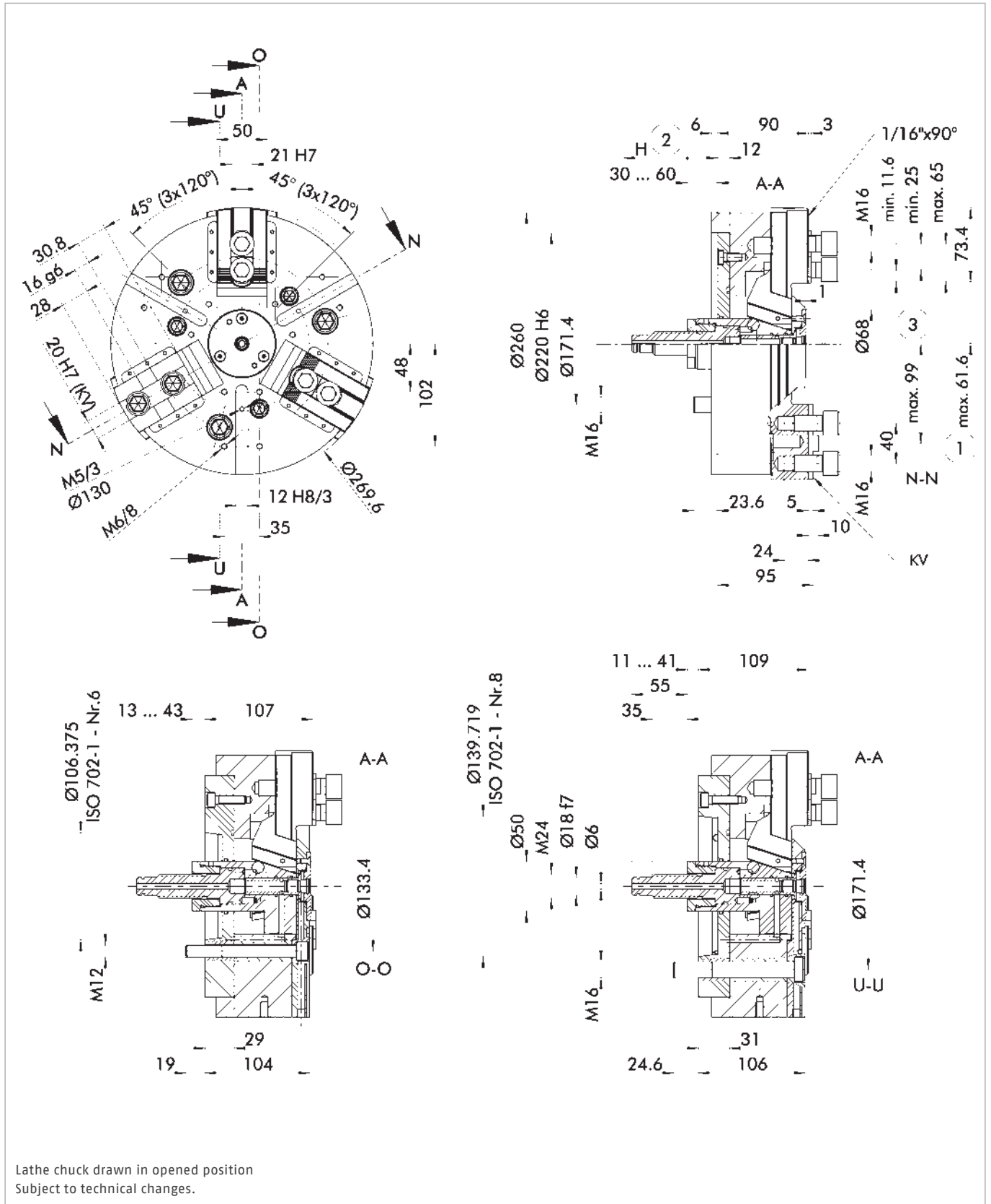
Clamping force-RPM-diagram



- Required minimum clamping force F_{spmin} 33%
- SHB 210
2 kg
- SWB 200
4.1 kg
- SWB-AL 200
1.5 kg

Load of base jaw guidance





- ① Distance to center of first tooth
- ② Piston stroke direction

- ③ Distance to center of tongue and groove

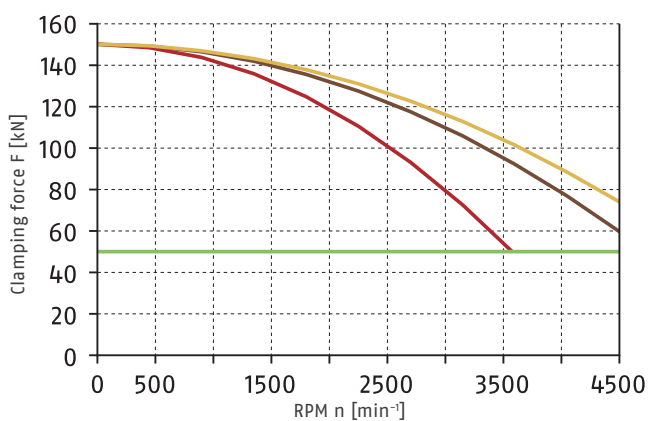
Technical data

Spindle type	Spindle size	ID	Serration	Max. rotational speed [min ⁻¹]	Max. clamping force [kN]	Max. actuating force [kN]	Stroke/jaw [mm]	Piston stroke (H) [mm]	Moment of inertia [kgm ²]	Weight [kg]
ISO 702-4	Nr. 8 (Z220)	0856020	1/16" x 90°	4500	150	62	10	30	0.3	34
ISO 702-1	Nr. 6	0856021	1/16" x 90°	4500	150	62	10	30	0.33	39
ISO 702-1	Nr. 8	0856022	1/16" x 90°	4500	150	62	10	30	0.33	38
ISO 702-4	Nr. 8 (Z220)	0856023	Tongue and groove	4500	150	62	10	30	0.3	34
ISO 702-1	Nr. 6	0856024	Tongue and groove	4500	150	62	10	30	0.33	39
ISO 702-1	Nr. 8	0856025	Tongue and groove	4500	150	62	10	30	0.33	38

Scope of delivery

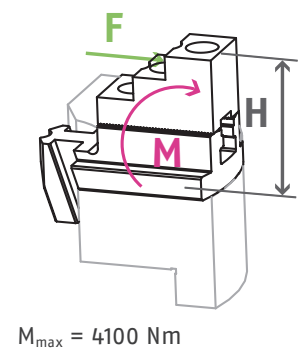
Chuck, T-nuts or mounting screws for top jaws, chuck mounting screws and operating manual

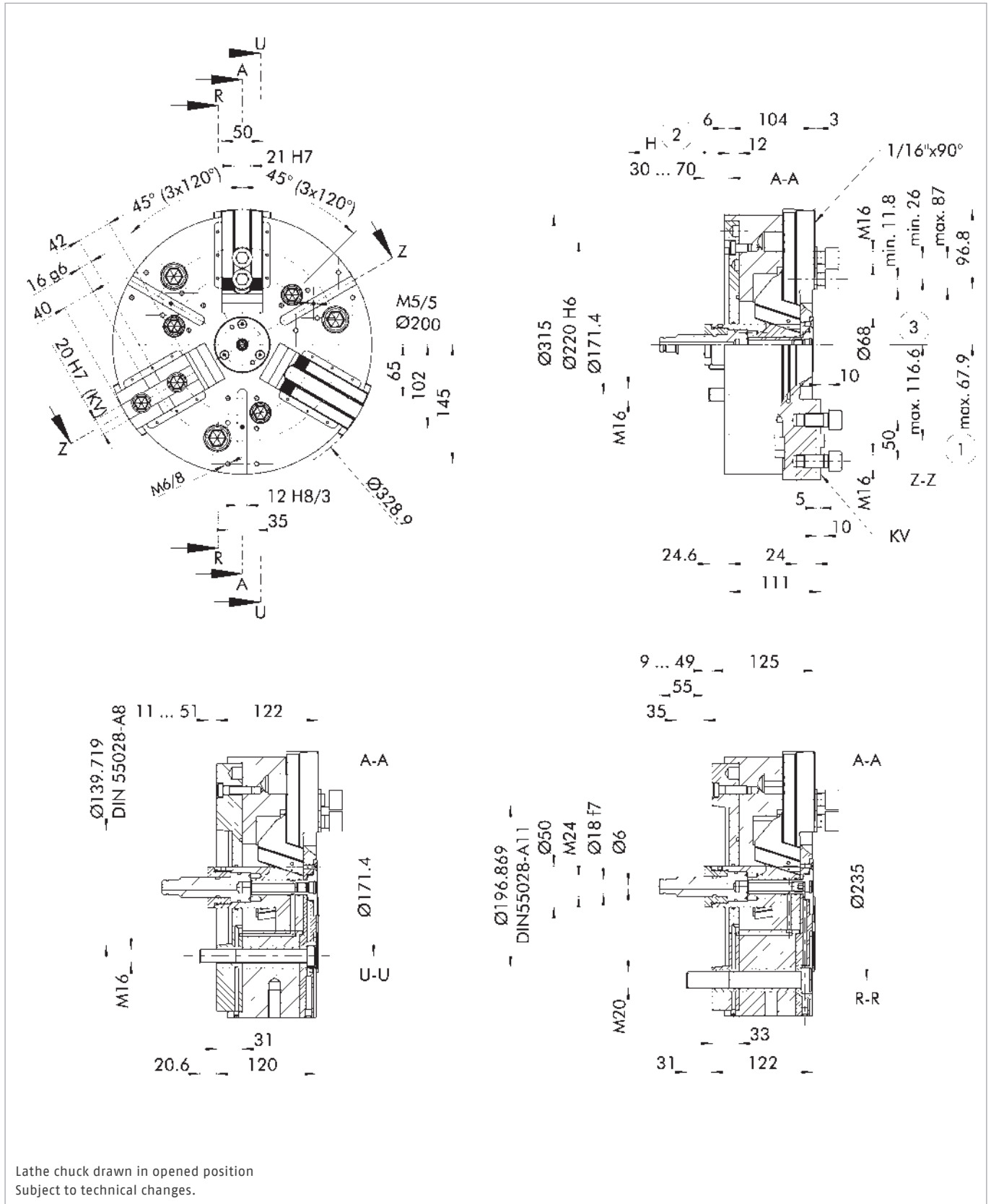
Clamping force-RPM-diagram



- Required minimum clamping force F_{spmin} 33%
- SHB 250 3.5 kg
- SWB 250 9.2 kg
- SWB-AL 250 3.29 kg

Load of base jaw guidance





- ① Distance to center of first tooth
- ② Piston stroke direction

- ③ Distance to center of tongue and groove

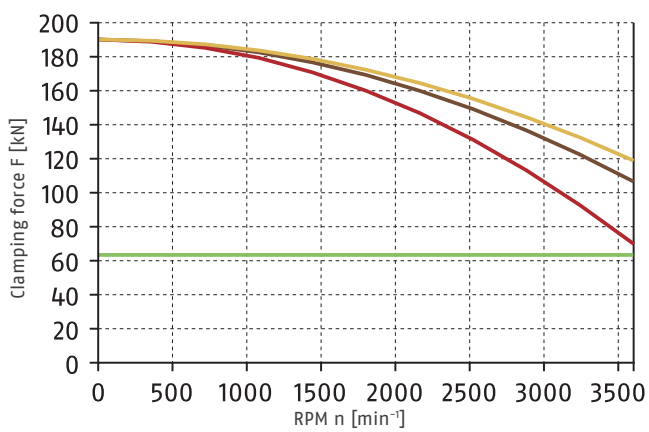
Technical data

Spindle type	Spindle size	ID	Serration	Max. rotational speed [min ⁻¹]	Max. clamping force [kN]	Max. actuating force [kN]	Stroke/jaw [mm]	Piston stroke (H) [mm]	Moment of inertia [kgm ²]	Weight [kg]
ISO 702-4	Nr. 8 (Z220)	0856030	1/16" x 90°	3600	190	90	13	40	0.77	59
ISO 702-1	Nr. 8	0856032	1/16" x 90°	3600	190	90	13	40	0.86	66
ISO 702-1	Nr. 11	0856033	1/16" x 90°	3600	190	90	13	40	0.85	65
ISO 702-4	Nr. 8 (Z220)	0856034	Tongue and groove	3600	190	90	13	40	0.77	59
ISO 702-1	Nr. 8	0856036	Tongue and groove	3600	190	90	13	40	0.86	66
ISO 702-1	Nr. 11	0856037	Tongue and groove	3600	190	90	13	40 </td <td>0.85</td> <td>65</td>	0.85	65

Scope of delivery

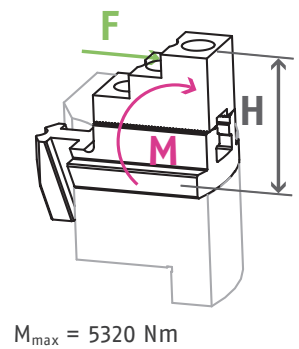
Chuck, T-nuts or mounting screws for top jaws, chuck mounting screws, eye bolt, and operating manual

Clamping force-RPM-diagram



- Required minimum clamping force F_{spmin} 33%
- SHB 315
4.6 kg
- SWB 250
9.2 kg
- SWB-AL 250
3.29 kg

Load of base jaw guidance



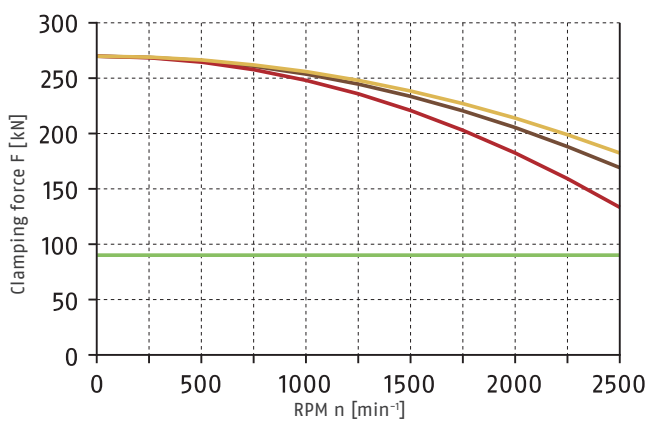
Technical data

Spindle type	Spindle size	ID	Serration	Max. rotational speed [min ⁻¹]	Max. clamping force [kN]	Max. actuating force [kN]	Stroke/jaw [mm]	Piston stroke (H) [mm]	Moment of inertia [kgm ²]	Weight [kg]
ISO 702-4	Nr. 11 (Z300)	0856040	3/32" x 90°	2500	270	120	15	45	2.25	108
ISO 702-1	Nr. 11	0856041	3/32" x 90°	2500	270	120	15	45	2.36	114
ISO 702-4	Nr. 11 (Z300)	0856042	Tongue and groove	2500	270	120	15	45	2.25	108
ISO 702-1	Nr. 11	0856043	Tongue and groove	2500	270	120	15	45	2.36	114

Scope of delivery

Chuck, T-nuts or mounting screws for top jaws, chuck mounting screws, eye bolt, and operating manual

Clamping force-RPM-diagram

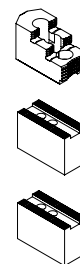


Required minimum clamping force F_{spmin} 33%

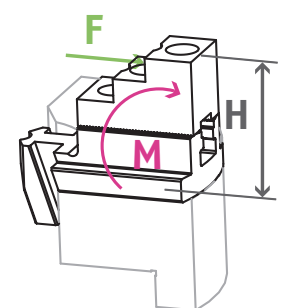
SHB 400
7.8 kg

SWB 400
16 kg

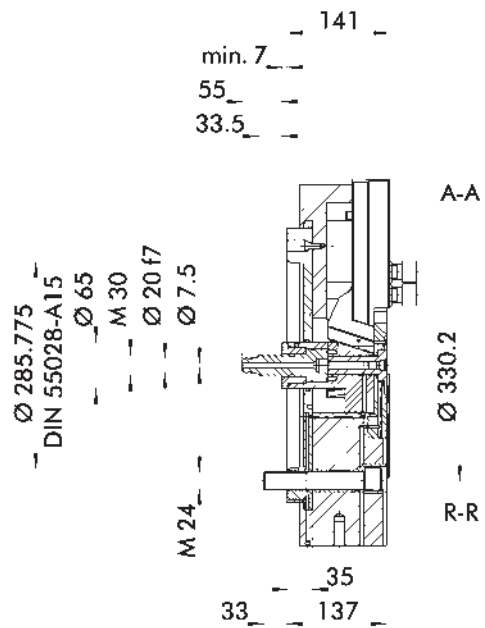
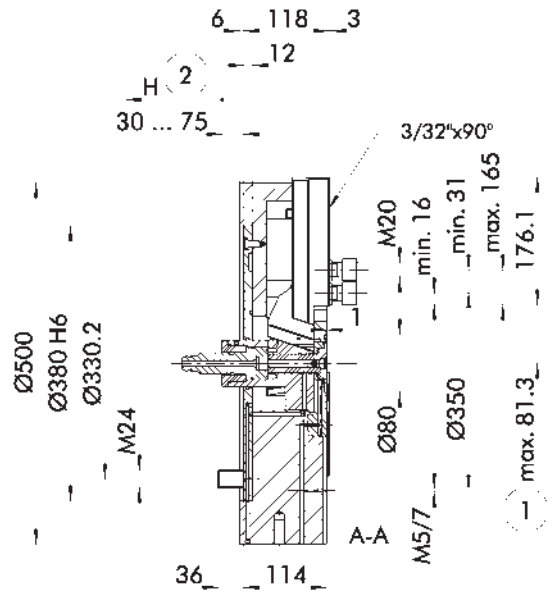
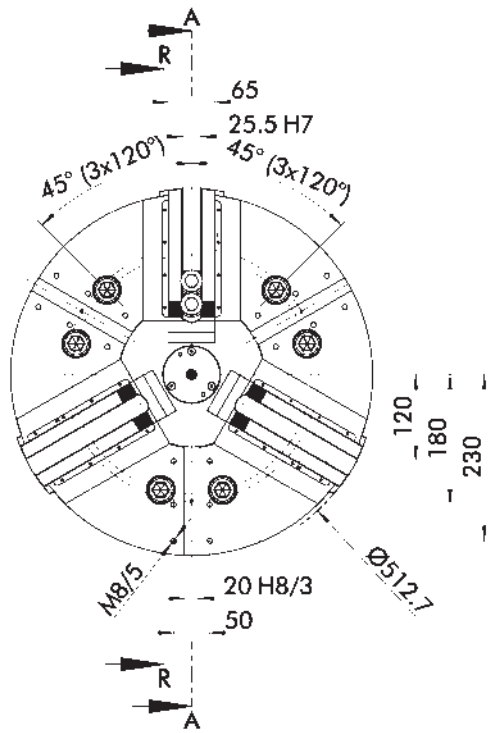
SWB-AL 400
6.4 kg



Load of base jaw guidance



$M_{max} = 9900 \text{ Nm}$



Lathe chuck drawn in opened position
Subject to technical changes.

① Distance to center of first tooth

② Piston stroke direction

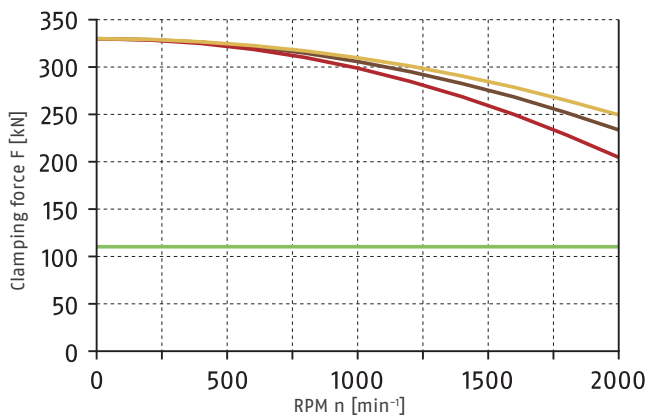
Technical data

Spindle type	Spindle size	ID	Serration	Max. rotational speed [min ⁻¹]	Max. clamping force [kN]	Max. actuating force [kN]	Stroke/jaw [mm]	Piston stroke (H) [mm]	Moment of inertia [kgm ²]	Weight [kg]
ISO 702-4	Nr. 15 (Z380)	0856050	3/32" x 90°	2000	330	140	15	45	5.3	164
ISO 702-1	Nr. 15	0856051	3/32" x 90°	2000	330	140	15	45	5.6	172

Scope of delivery

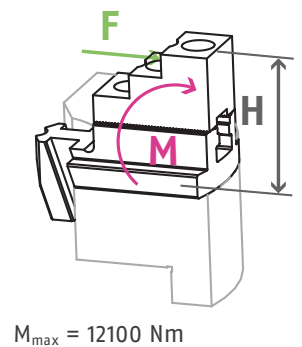
Chuck, T-nuts or mounting screws for top jaws, chuck mounting screws, eye bolt, and operating manual

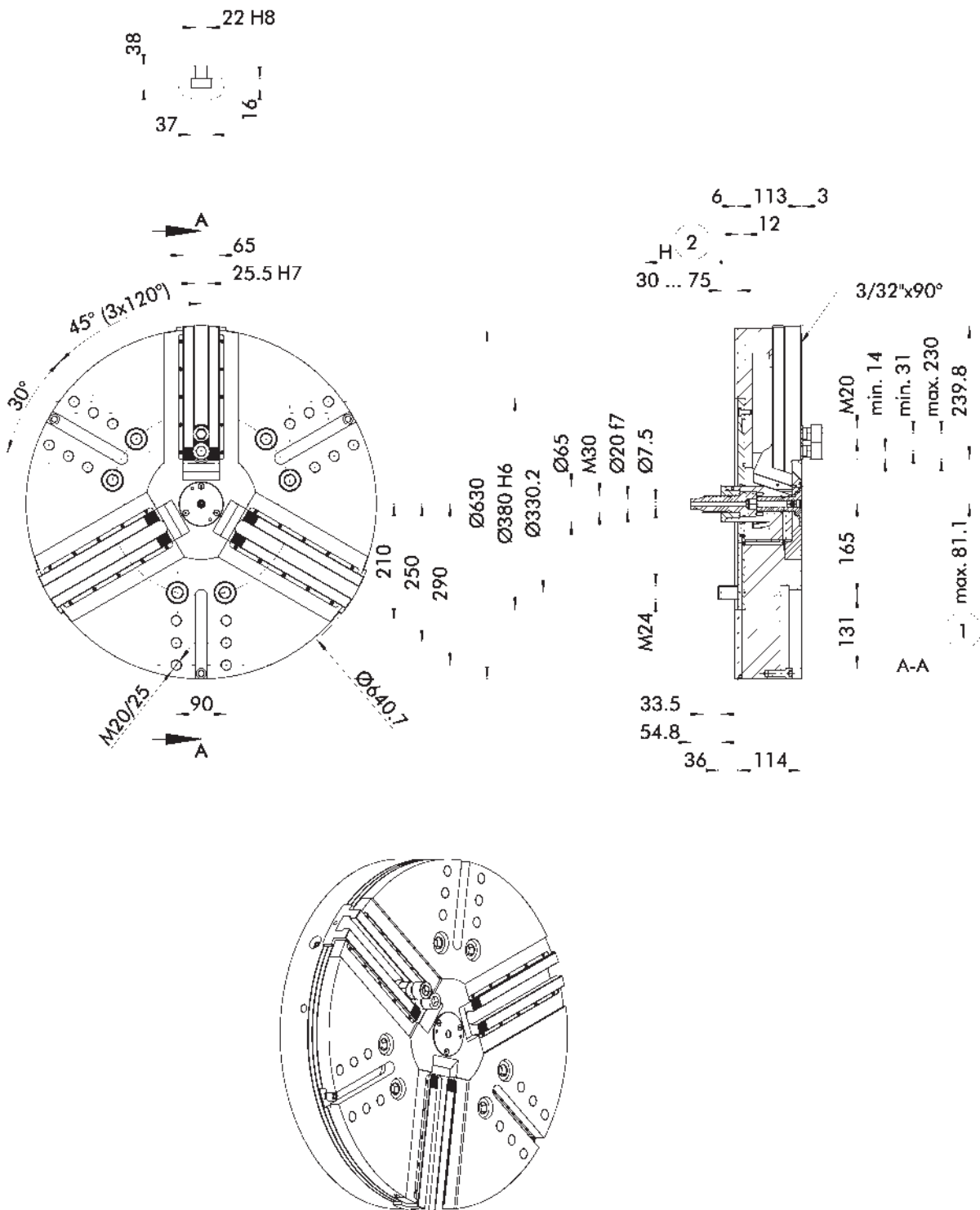
Clamping force-RPM-diagram



- Required minimum clamping force F_{spmin} 33%
- SHB 400
7.8 kg
- SWB 400
16 kg
- SWB-AL 400
6.4 kg

Load of base jaw guidance





Lathe chuck drawn in opened position
Subject to technical changes.

① Distance to center of first tooth

② Piston stroke direction

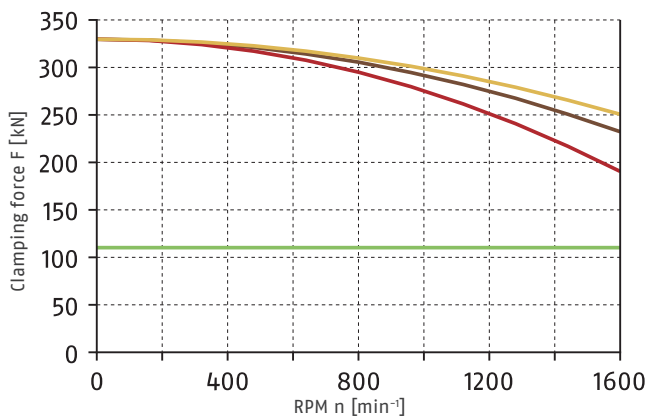
Technical data

Spindle type	Spindle size	ID	Serration	Max. rotational speed [min ⁻¹]	Max. clamping force [kN]	Max. actuating force [kN]	Stroke/jaw [mm]	Piston stroke (H) [mm]	Moment of inertia [kgm ²]	Weight [kg]
ISO 702-4	Nr. 15 (Z380)	0856060	3/32" x 90°	1600	330	140	15	45	13.8	263

Scope of delivery

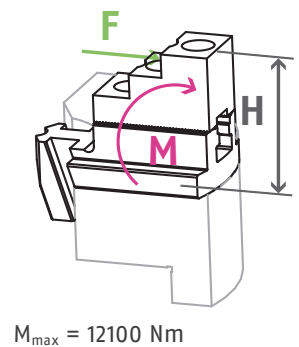
Chuck, T-nuts or mounting screws for top jaws, chuck mounting screws, eye bolt, and operating manual

Clamping force-RPM-diagram



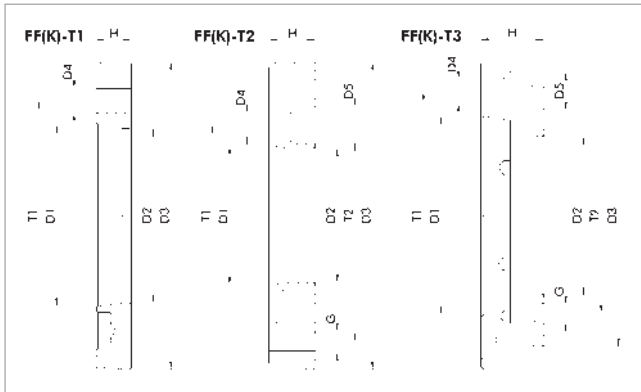
- Required minimum clamping force F_{spmin} 33%
 - SHB 400
7.8 kg
 - SWB 400
16 kg
 - SWB-AL 400
6.4 kg
-

Load of base jaw guidance



Adapter plates

Z-mount on short taper ISO 702-1



Technical data

Description	Adapter plate type	ID	Suitable for	D1	D2	D3	D4	D5	G	H	T1	T2
FF-T2 Z140-A4	FF-T2	0805000	ROTA NCO 165	Nr. 4	61	Z140	11 (6x60°)	17	M10 (6x60°)	21	82.6	104.8
FF-T1 Z140-A5	FF-T1	0803000	ROTA NCO 165	Nr. 5	79.6	Z140	11 (6x60°)			16	104.8	
FF-T3 Z140-A6	FF-T3	0801000	ROTA NCO 165	Nr. 6	85	Z140	13 (6x60°)	20	M10 (6x60°)	34	133.4	104.8
FF-T2 Z170-A5	FF-T2	0805001	ROTA NCO 210	Nr. 5	79.6	Z170	11 (6x60°)	18	M12 (12 x 30°)	25	104.8	133.4
FF-T1 Z170-A6	FF-T1	0803001	ROTA NCO 210	Nr. 6	103.2	Z170	13 (6x60°)			17	133.4	
FF-T3 Z170-A8	FF-T3	0801001	ROTA NCO 210	Nr. 8	113	Z170	17 (6x60°)	26	M12 (6x60°) M12 (2x180°)	40	171.4	133.4
FF-T2 Z220-A5	FF-T2	0805002	ROTA NCO 260 ROTA NCO 315	Nr. 5	79.6	Z220	11 (6x60°)	17	M16 (6x60°) M16 (2x180°)	28	104.8	171.4
FF-T2 Z220-A6	FF-T2	0805003	ROTA NCO 260 ROTA NCO 315	Nr. 6	103.2	Z220	13 (6x60°)	20	M16 (6x60°) M16 (2x180°)	28	133.4	171.4
FF-T1 Z220-A8	FF-T1	0803002	ROTA NCO 260 ROTA NCO 315	Nr. 8	136.2	Z220	17 (6x60°) 17 (2x180°)			19	171.4	
FF-T3 Z220-A11	FF-T3	0803003	ROTA NCO 260 ROTA NCO 315	Nr. 11	130	Z220	21 (6x60°)	32	M16 (12 x 30°)	50	235	171.4
FF-T3 Z220-A15-1	FF-T3	0803020	ROTA NCO 260 ROTA NCO 315	Nr. 15	145	Z220	26 (6x60°)	38	M16 (6x60°)	55	330.2	171.4
FF-T3 Z220-A15-2	FF-T3	0803021	ROTA NCO 260 ROTA NCO 315	Nr. 15	145	Z220	23 (6x60°)	35	M16 (6x60°)	55	330.2	171.4
FF-T2 Z300-A6	FF-T2	0805004	ROTA NCO 400	Nr. 6	103.2	Z300	14 (6x60°)	20	M20 (6x60°) M20 (3x120°)	30	133.4	235
FF-T2 Z300-A8	FF-T2	0805005	ROTA NCO 400	Nr. 8	136.2	Z300	17 (6x60°)	26	M20 (6x60°) M20 (3x120°)	30	171.4	235
FF-T1 Z300-A11	FF-T1	0803004	ROTA NCO 400	Nr. 11	192.9	Z300	22 (6x60°) 22 (3x120°)			21	235	
FF-T3 Z300-A15-1	FF-T3	0803005	ROTA NCO 400	Nr. 15	190	Z300	26 (6x60°)	38	M20 (6x60°)	55	330.2	235
FF-T3 Z300-A15-2	FF-T3	0803022	ROTA NCO 400	Nr. 15	190	Z300	23 (6x60°)	35	M20 (6x60°)	55	330.2	235
FF-T2 Z380-A8	FF-T2	0805010	ROTA NCO 500 ROTA NCO 630	Nr. 8	136.2	Z380	17 (6x60°)	26	M24 (12 x 30°)	38	171.4	330.2
FF-T2 Z380-A11	FF-T2	0803006	ROTA NCO 500 ROTA NCO 630	Nr. 11	192.9	Z380	21 (6x60°)	32	M24 (6x60°) M24 (3x120°)	38	235	330.2
FF-T1 Z380-A15-1	FF-T1	0803023	ROTA NCO 500 ROTA NCO 630	Nr. 15	281.5	Z380	26 (6x60°)			47	330.2	

Direct adapter plates

Direct adapter plates are used if the spindle mounting bolt circle has the same size as the lathe chuck mounting bolt circle. The adapter plate has to be mounted on to the spindle together with the lathe chuck. The adapter plate is preassembled on the lathe chuck.

Reduction adapter plates FF-T2

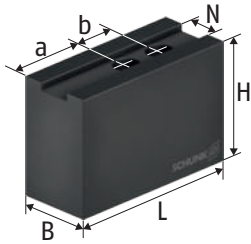
Reduction adapter plates are used if the mounting bolt circle of the spindle is smaller than the lathe chuck mounting bolt circle. The adapter plate is first mounted on the spindle and then the lathe chuck is mounted on the adapter plate.

Expansion adapter plates FF-T3

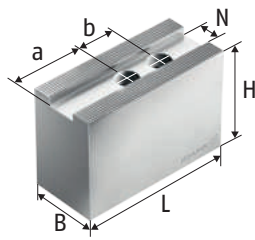
Expansion adapter plates are used if the mounting bolt circle of the spindle is larger than the lathe chuck mounting bolt circle. The adapter plate is first mounted on the spindle and then the lathe chuck is mounted on the adapter plate.

Soft top jaws

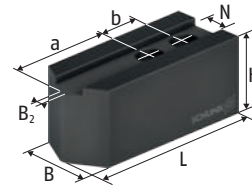
with fine serration 90°



CWB
Soft top jaws



SWB-AL
Soft top jaws



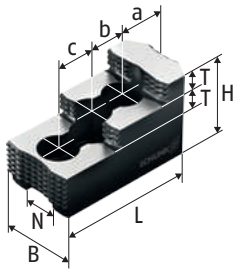
SWBL
Soft top jaws

Technical data

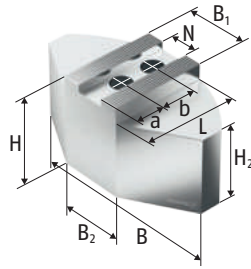
Chuck type	Description	ID	N [mm]	B [mm]	H [mm]	L [mm]	a [mm]	b [mm]	Screws	m/SET [kg]
ROTA NCO 165	SWBL 160	0120151	17	35	40	78	41	22	M12	1.9
ROTA NCO 165	CWB 160	0100005	17	35	40	70	33	22	M12	1.7
ROTA NCO 165	SWB 160	0120102	17	40	60	70	33	22	M12	3.1
ROTA NCO 165	SWB-AL 160	0168100	17	40	60	70	33	22	M12	1.1
ROTA NCO 210	SWBL 200	0120153	17	35	40	98	61	22	M12	2.6
ROTA NCO 210	CWB 200	0100006	17	40	40	90	43	22	M12	2.7
ROTA NCO 210	SWB 200	0120104	17	40	60	90	43	22	M12	4.1
ROTA NCO 210	FR-AL 200	0120602	17	40	60	90	59	19	M12	1.6
ROTA NCO 210	SWB-AL 200	0168101	17	40	60	90	43	22	M12	1.5
ROTA NCO 260	SWBL 250-21	0120155	21	50	50	120	72	28	M16	5.4
ROTA NCO 260	CWB 251	0100012	21	50	60	95	52	28	M16	5.2
ROTA NCO 260	SWB 250	0120105	21	50	80	120	62	28	M16	9.2
ROTA NCO 260	SWB-AL 250	0168102	21	50	80	120	62	28	M16	3.3
ROTA NCO 315	SWBL 250-21	0120155	21	50	50	120	72	28	M16	5.4
ROTA NCO 315	CWB 251	0100012	21	50	60	95	52	28	M16	5.2
ROTA NCO 315	SWB 250	0120105	21	50	80	120	62	28	M16	9.2
ROTA NCO 315	SWB-AL 250	0168102	21	50	80	120	62	28	M16	3.3
ROTA NCO 400	SWB-AL 400	0168103	25.5	60	100	155	90	35	M20	6.4
ROTA NCO 400	SWB 400	0120107	25.5	60	90	155	90	35	M20	16.0
ROTA NCO 400	SP-WB 400	0124105	25.5	60	100	155	80	40	M18	18.6
ROTA NCO 400	SP-WB 500	0124106	25.5	60	100	195	118	40	M18	24.0
ROTA NCO 400	CWB 400	0100008	25.5	60	80	140	75	35	M20	12.6
ROTA NCO 500	SWB-AL 400	0168103	25.5	60	100	155	90	35	M20	6.4
ROTA NCO 500	SWB 400	0120107	25.5	60	90	155	90	35	M20	16.0
ROTA NCO 500	SP-WB 400	0124105	25.5	60	100	155	80	40	M18	18.6
ROTA NCO 500	SP-WB 500	0124106	25.5	60	100	195	118	40	M18	24.0
ROTA NCO 500	CWB 400	0100008	25.5	60	80	140	75	35	M20	12.6
ROTA NCO 630	SWB-AL 400	0168103	25.5	60	100	155	90	35	M20	6.4
ROTA NCO 630	SWB 400	0120107	25.5	60	90	155	90	35	M20	16.0
ROTA NCO 630	SP-WB 400	0124105	25.5	60	100	155	80	40	M18	18.6
ROTA NCO 630	SP-WB 500	0124106	25.5	60	100	195	118	40	M18	24.0
ROTA NCO 630	CWB 400	0100008	25.5	60	80	140	75	35	M20	12.6

Our complete range of chuck jaws can be found online in our Chuck Jaw Quickfinder and on schunk.com

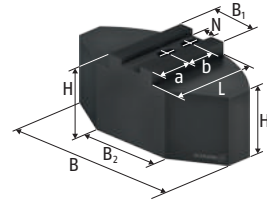
Hard stepped top jaws, Full grip jaws with fine serration 90°



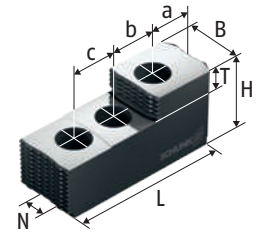
SHB
Hard stepped top jaws



SWB-SA
Full grip jaws



SWB-SM
Full grip jaws



SP-HB
Hard stepped top jaws

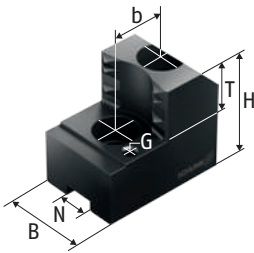
Technical data

Chuck type	Description	ID	N [mm]	B [mm]	B1 [mm]	H [mm]	H2 [mm]	L [mm]	T [mm]	a [mm]	b [mm]	c [mm]	Screws	m/SET [kg]
ROTA NCO 165	SWB-SA 160	0170100	17	120	40	58	48	59.5		22	22		M12	2.2
ROTA NCO 165	SWB-SM 160	0169100	17	120	40	60	50	59.5		24.5	22		M12	5.7
ROTA NCO 165	SHB 200	0121104	17	40		49		72.5	12	18	19	19	M12	1.6
ROTA NCO 210	SWB-SA 200	0170101	17	140	40	58	48	72.5		35	22		M12	3.1
ROTA NCO 210	SWB-SA 201	0170106	17	140	40	75	65	72.5		35	22		M12	4.2
ROTA NCO 210	SWB-SM 200	0169101	17	140	40	60	50	69.5		35	22		M12	8.6
ROTA NCO 210	SWB-SM 201	0169106	17	140	40	75	65	69.5		35	22		M12	11.5
ROTA NCO 210	SHB 210	0121102	17	40		49		84.3	12	28.7	19	19	M12	2.0
ROTA NCO 260	SWB-SA 250-21	0170103	21	180	50	78	63	87.5		40	28		M16	6.3
ROTA NCO 260	SWB-SA 251	0170107	21	180	50	100	85	87.5		40	28		M16	8.3
ROTA NCO 260	SWB-SM 250-21	0169103	21	180	50	70	55	80		29	28		M16	14.5
ROTA NCO 260	SWB-SM 251	0169107	21	180	50	100	85	80		30	28		M16	22.0
ROTA NCO 260	SHB 250	0121105	21	50		58		103.5	14	34	25	25	M16	3.5
ROTA NCO 315	SWB-SA 315	0170104	21	240	50	78	63	117		70	28		M16	11.0
ROTA NCO 315	SWB-SM 315	0169104	21	240	50	70	55	110		60	28		M16	26.6
ROTA NCO 315	SHB 315	0121111	21	50		58		128	14	46	30	30	M16	4.6
ROTA NCO 400	SWB-SA 400	0170105	25.5	330	150	98	68	160		84.5	35		M20	24.4
ROTA NCO 400	SWB-SM 400	0169105	25.5	330	60	85	55	155		83.5	35		M20	53.8
ROTA NCO 400	SHB 400	0121107	25.5	60		75		140	18	53	31	31	M20	7.8
ROTA NCO 400	SP-HB 400-500	0125105	25.5	57.5		73		160	22	43.1	42	42	M18	9.8
ROTA NCO 500	SWB-SA 400	0170105	25.5	330	150	98	68	160		84.5	35		M20	24.4
ROTA NCO 500	SWB-SM 400	0169105	25.5	330	60	85	55	155		83.5	35		M20	53.8
ROTA NCO 500	SHB 400	0121107	25.5	60		75		140	18	53	31	31	M20	7.8
ROTA NCO 500	SP-HB 400-500	0125105	25.5	57.5		73		160	22	43.1	42	42	M18	9.8
ROTA NCO 630	SWB-SA 400	0170105	25.5	330	150	98	68	160		84.5	35		M20	24.4
ROTA NCO 630	SWB-SM 400	0169105	25.5	330	60	85	55	155		83.5	35		M20	53.8
ROTA NCO 630	SHB 400	0121107	25.5	60		75		140	18	53	31	31	M20	7.8
ROTA NCO 630	SP-HB 400-500	0125105	25.5	57.5		73		160	22	43.1	42	42	M18	9.8

Our complete range of chuck jaws can be found online in our Chuck Jaw Quickfinder and on schunk.com

Claw jaws

with fine serration 90°



SZA
Claw jaws

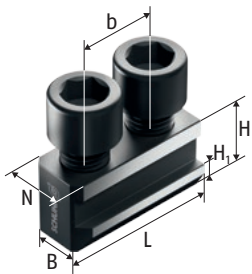
Technical data

Chuck type	Clamping range ØD	Swing diameter SDmax	Description	ID	N	B	H	T	G	b	Screws	m/SET
	[mm]	[mm]			[mm]	[mm]	[mm]	[mm]		[mm]		[kg]
ROTA NCO 165	40 - 69	184	SZA 16-30	0122110	17	35	50	20	M5	19	M12	1.3
ROTA NCO 165	59 - 88	184	SZA 16-31	0122111	17	35	50	20	M5	19	M12	1.2
ROTA NCO 165	81 - 111	184	SZA 16-32	0122112	17	35	50	20	M5	19	M12	1.1
ROTA NCO 165	99 - 129	189	SZA 16-33	0122113	17	40	50	20	M5	19	M12	1.2
ROTA NCO 165	121 - 151	211	SZA 16-34	0122114	17	40	50	20	M5	19	M12	1.6
ROTA NCO 210	30 - 82	231	SZA 20-14	0138195	17	35	50	25	M6	22	M12	1.8
ROTA NCO 210	54 - 110	231	SZA 20-15	0138196	17	35	50	25	M6	22	M12	1.5
ROTA NCO 210	83 - 140	231	SZA 20-16	0138197	17	40	50	25	M6	22	M12	1.5
ROTA NCO 210	110 - 167	233	SZA 20-17	0138198	17	40	50	25	M6	22	M12	1.6
ROTA NCO 210	140 - 197	257	SZA 20-18	0138199	17	40	50	25	M6	22	M12	1.8
ROTA NCO 260	51 - 115	283	SZA 25-37	0138180	21	50	58	25	M8	28	M16	3.3
ROTA NCO 260	90 - 155	283	SZA 25-38	0138181	21	50	58	25	M8	28	M16	2.9
ROTA NCO 260	140 - 204	285	SZA 25-39	0138182	21	50	58	25	M8	28	M16	2.7
ROTA NCO 260	187 - 251	322	SZA 25-40	0138183	21	50	58	25	M8	28	M16	3.2
ROTA NCO 315	45 - 143	344	SZA 31-10	0138184	21	50	58	25	M8	28	M16	3.4
ROTA NCO 315	100 - 201	344	SZA 31-11	0138185	21	50	58	25	M8	28	M16	3.4
ROTA NCO 315	165 - 267	343	SZA 31-12	0138186	21	50	58	25	M8	28	M16	3.2
ROTA NCO 315	229 - 315	387	SZA 31-13	0138187	21	50	58	25	M8	28	M16	4.7
ROTA NCO 400	61 - 181	446	SZA 40-11	0138300	25.5	60	78	33	M8	35	M20	8.0
ROTA NCO 400	115 - 266	492	SZA 40-13	0138302	25.5	60	78	33	M8	35	M20	8.0
ROTA NCO 400	198 - 351	472	SZA 40-14	0138303	25.5	60	78	33	M8	35	M20	8.0
ROTA NCO 400	269 - 400	494	SZA 40-15	0138304	25.5	60	78	33	M8	35	M20	9.3
ROTA NCO 500	73 - 243	593	SZA 40-12	0138301	25.5	60	78	33	M8	35	M20	11.5
ROTA NCO 500	120 - 343	569	SZA 40-13	0138302	25.5	60	78	33	M8	35	M20	8.0
ROTA NCO 500	203 - 428	549	SZA 40-14	0138303	25.5	60	78	33	M8	35	M20	8.0
ROTA NCO 500	273 - 499	593	SZA 40-15	0138304	25.5	60	78	33	M8	35	M20	9.3
ROTA NCO 500	350 - 540	640	SZA 40-16	0138305	25.5	60	78	33	M8	35	M20	11.0
ROTA NCO 630	74 - 383	718	SZA 40-12	0138301	25.5	60	78	33	M8	35	M20	11.5
ROTA NCO 630	136 - 502	732	SZA 40-13	0138302	25.5	60	78	33	M8	35	M20	8.0
ROTA NCO 630	222 - 585	711	SZA 40-14	0138303	25.5	60	78	33	M8	35	M20	8.0
ROTA NCO 630	292 - 657	754	SZA 40-15	0138304	25.5	60	78	33	M8	35	M20	9.3
ROTA NCO 630	345 - 666	766	SZA 40-16	0138305	25.5	60	78	33	M8	35	M20	11.0

Our complete range of chuck jaws can be found online in our Chuck Jaw Quickfinder and on schunk.com

T-nut

with fine serration 90°



NKA
T-nut



NS
T-nut



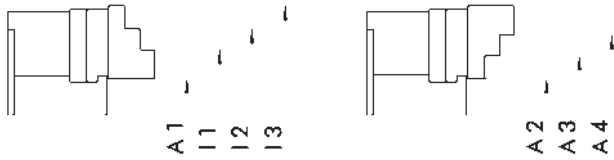
NKS
T-nut

Chuck type	Description	ID	H	H1	b	G	Cyl.-screw	Max. adm. tightening torque
			[mm]	[mm]	[mm]			[Nm]
ROTA NCO 165	NKA 2	0145104	20.5	7.5	22	M12	M12 x 25	70
ROTA NCO 165	NKS 2	0143106	20.5	7.5		M12	M12 x 25	70
ROTA NCO 210	NKA 2	0145104	20.5	7.5	22	M12	M12 x 25	70
ROTA NCO 210	NKS 2	0143106	20.5	7.5		M12	M12 x 25	70
ROTA NCO 260	NKA 3	0145105	26.5	10	28	M16	M16 x 35	150
ROTA NCO 260	NKS 3	0143107	26.5	10		M16	M16 x 35	150
ROTA NCO 315	NKA 3	0145105	26.5	10	28	M16	M16 x 35	150
ROTA NCO 315	NKS 3	0143107	26.5	10		M16	M16 x 35	150
ROTA NCO 400	NS 201	0142103	33.7	15.5		M20	M20 x 45	300
ROTA NCO 500	NS 201	0142103	33.7	15.5		M20	M20 x 45	300
ROTA NCO 630	NS 201	0142103	33.7	15.5		M20	M20 x 45	300

Our complete range of chuck jaws can be found online in our Chuck Jaw Quickfinder and on schunk.com

Hard stepped top jaws

with fine serration 90°



Jaw position I

Jaw position II

O.D. clamping

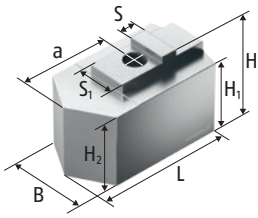
Chuck type	Description	ID	A1 [mm]	A2 [mm]	A3 [mm]	A4 [mm]
ROTA NCO 165	SHB 200	0121104	13 - 69	25 - 80	73 - 122	115 - 165
ROTA NCO 210	SHB 210	0121102	5 - 108	31 - 89	81 - 135	127 - 199
ROTA NCO 260	SHB 250	0121105	16 - 132	37 - 128	119 - 201	192 - 260
ROTA NCO 315	SHB 315	0121111	16 - 154	32 - 137	124 - 229	216 - 315
ROTA NCO 400	SHB 400	0121107	22 - 230	53 - 170	156 - 272	257 - 400
ROTA NCO 500	SHB 400	0121107	22 - 328	53 - 170	156 - 272	257 - 500
ROTA NCO 630	SHB 400	0121107	22 - 457	49 - 165	151 - 267	253 - 630

I.D. clamping

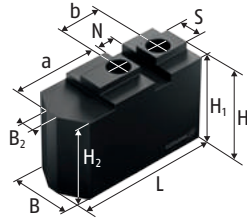
Chuck type	Description	ID	I1 [mm]	I2 [mm]	I3 [mm]
ROTA NCO 165	SHB 200	0121104	67 - 115	109 - 161	155 - 210
ROTA NCO 210	SHB 210	0121102	80 - 134	126 - 183	174 - 265
ROTA NCO 260	SHB 250	0121105	69 - 151	142 - 231	222 - 330
ROTA NCO 315	SHB 315	0121111	88 - 192	180 - 283	271 - 380
ROTA NCO 400	SHB 400	0121107	97 - 213	199 - 314	300 - 480
ROTA NCO 500	SHB 400	0121107	97 - 213	199 - 314	300 - 606
ROTA NCO 630	SHB 400	0121107	97 - 213	199 - 314	300 - 730

Soft top jaws

with tongue and groove



SRK-AL
Soft top jaws



SRK
Soft top jaws

Technical data

Chuck type	Description	ID	N [mm]	S [mm]	B [mm]	H [mm]	H1 [mm]	H2 [mm]	L [mm]	a [mm]	b [mm]	Screws	m/SET [kg]
ROTA NCO 165	SRK 160	0136105	10	16	40	60	55.5	54	76	35.5	25	M12	2.9
ROTA NCO 165	SRKL 160	1496965	10	16	40	60	55.5	54	88	35.5	25	M12	3.5
ROTA NCO 165	SRKL-AL 160	1496969	10	16	40	60	55.5	54	88	35.5	25	M12	1.3
ROTA NCO 210	SRK 200	0136106	12	16	40	60	55.5	54	94	49	30	M12	3.9
ROTA NCO 260	SRK 250	0136107	16	20	50	80	75.5	74	117	60	40	M16	8.2
ROTA NCO 315	SRK 315	0136109	16	20	50	80	75.5	75	149	67	50	M16	10.9
ROTA NCO 400	SRK 400	0136117	18	22	60	100	96	95	180	86	60	M16	21.4

Our complete range of chuck jaws can be found online in our Chuck Jaw Quickfinder and on schunk.com

Accessories

Clamping force tester

For measuring the jaw clamping force of 2, 3 and 6-jaw chucks up to 6,000 RPM.



Suitable for	Description	ID
ROTA NCO 165		
ROTA NCO 210		
ROTA NCO 260		
ROTA NCO 315		
ROTA NCO 400		
ROTA NCO 500		
ROTA NCO 630	I FT Set	1404235

Extension set for large chucks

For use as an extension of the IFT measuring head for measuring the jaw clamping force of large chucks of \varnothing 400 mm and more.



Suitable for	Description	ID
ROTA NCO 400		
ROTA NCO 500		
ROTA NCO 630	I FT adapter set	1498512

Modification air control

Transfer of the medium via threaded holes at the face of the groove which is integrated in the chuck body.



Suitable for	Description	ID
ROTA NCO 165	ROTA NCO-L 165	0856201
ROTA NCO 210	ROTA NCO-L 210	0856211
ROTA NCO 260	ROTA NCO-L 260	0856221
ROTA NCO 315	ROTA NCO-L 315	0856231
ROTA NCO 400		
ROTA NCO 500	ROTA NCO-L 400	0856241

Modification coolant supply

Coolant through feeding with integrated non-return valve and spray nozzle.



Suitable for	Description	ID
ROTA NCO 165	ROTA NCO-K 165	0856202
ROTA NCO 210	ROTA NCO-K 210	0856212
ROTA NCO 260	ROTA NCO-K 260	0856222
ROTA NCO 315	ROTA NCO-K 315	0856232
ROTA NCO 400		
ROTA NCO 500	ROTA NCO-K 400	0856242

Grease

LINOMAX plus

High-performance grease as standard for regularly lubricating SCHUNK manual and power lathe chucks and steady rests.



Bundle	Description	ID
Cartridge	LINOMAX plus cartridge	1342585
Can	LINOMAX plus can	1342586
Bucket	LINOMAX plus bucket	1342587

Grease gun

Auxiliary tools for lubrication of all kinds of SCHUNK products. The grease gun can be used for cartridges of all types of SCHUNK grease.



Bundle	Description	ID
Cartridge	Grease gun	9900543



**H.-D. SCHUNK GmbH & Co.
Spanntechnik KG**

Lothringer Str. 23
D-88512 Mengen
Tel. +49-7572-7614-1300
Fax +49-7572-7614-1039
CMM@de.schunk.com
schunk.com