

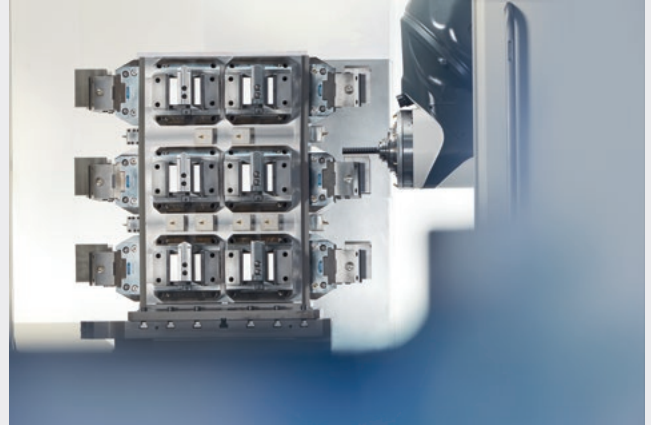


TANDEM® KSF3

Spring-loaded third-generation powerhouses

Compact, spring-loaded powerhouses for tombstone and storage solutions

TANDEM KSF3 stands for high-performance, spring-loaded clamping force blocks that are clamped via integrated spring assemblies and opened pneumatically. Due to the spring clamping, however, they are only suitable for O.D. clamping. The clamping force blocks are mainly used in tombstone and storage solutions, as the clamping force is fully maintained even after the compressed air has been removed. In the third generation, the vises can now also be equipped with pneumatic monitoring, which further increases the range of applications.

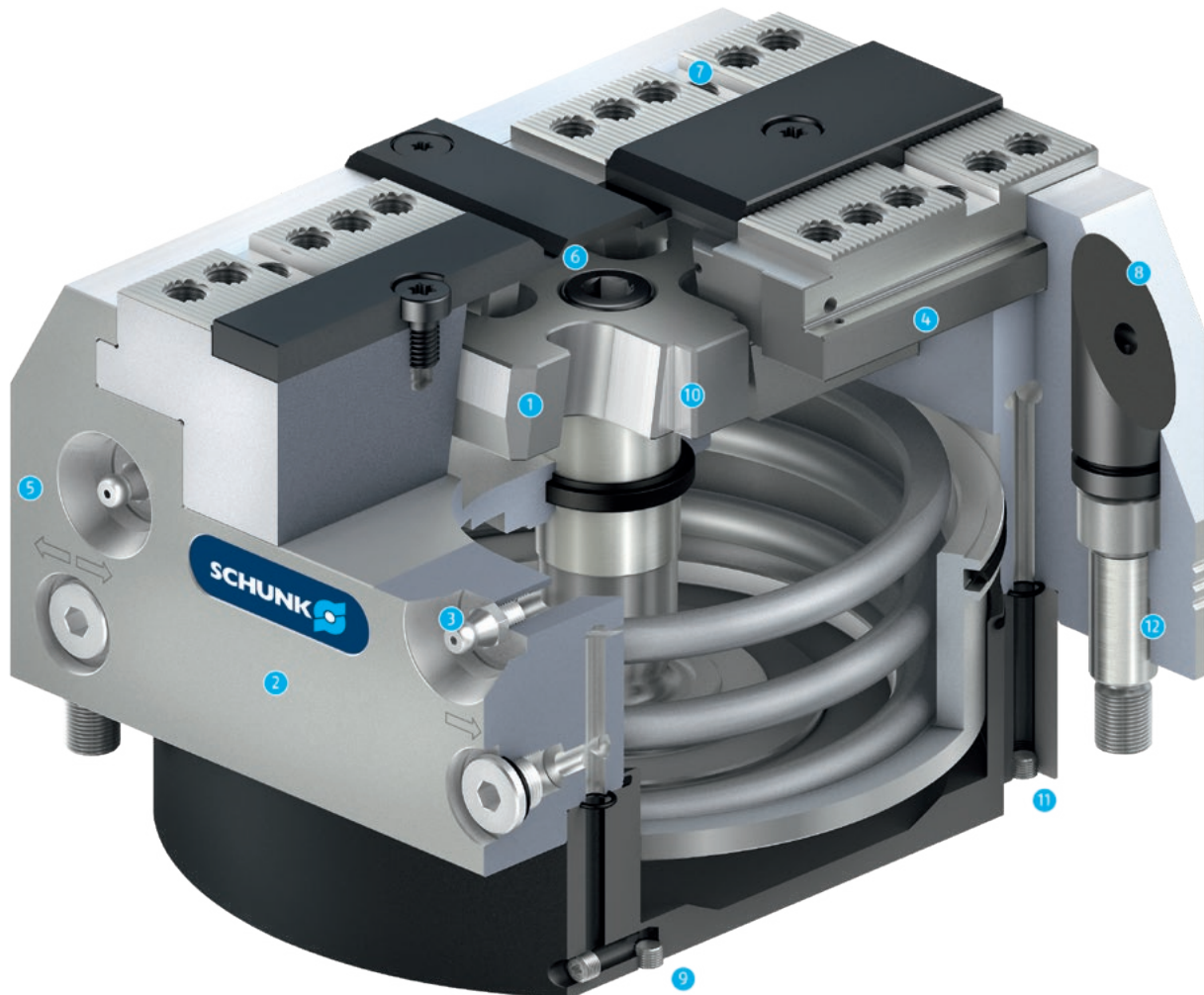


Advantages – Your benefits

- + Spring-loaded clamping force blocks**
Media-independent workpiece clamping, especially for tombstone or storage applications
- + Patented monitoring of the base jaw position via dynamic pressure**
Know whether the vise is open or clamped
- + Workpiece presence control through the base jaw**
Enables automated loading of the clamping force block
- + Precision wedge hook clamping force block for top-quality demands**
Allows excellent machining results
- + Square design with ideal external contour**
Ideal for 6-sided machining in two set-ups with the best lateral accessibility
- + High efficiency of the wedge hook system**
Process-reliable clamping due to high clamping forces
- + Base jaws with tongue and groove or fine serration as standard**
High flexibility of system jaws
- + Optimal jaw support due to the use of a very long base jaw guidance**
Allows high clamping forces at a long service life
- + All sides of the functional parts are hardened and ground**
Ensures a long service life

Function KSF3

With the help of the diagonal pull at the wedge hook, the power is transferred from the axially movable and spring-pretensioned pneumatic cylinder to the base jaws. For the KSF3 and KSF3-LH variants, the force generates a synchronous jaw movement to the clamping center. For the KSF3-F plus variant, the force generates a movement directed to the fixed jaw.



- 1 Wedge hook drive**
Offers constantly high clamping forces in operation
- 2 Hardened and extremely rigid base body**
Therefore a longer service life at highest precision. Even with maximum clamping force
- 3 Innovative greasing system**
For enhanced efficiency and constant clamping force
- 4 Long jaw guidance**
Offers optimum support for O.D. clamping
- 5 Low height design**
Expands your machine's workspace
- 6 Improved design which is insensitive to dirt**
By means of targeted sealing
- 7 Standard jaw interface**
For the use of standard jaws from SCHUNK
- 8 Ideal outside contour**
For best accessibility and optimal chip fall
- 9 Control of the clamping force block**
From the side or bottom as desired
- 10 Piston guided in the body**
For absorption of the machining forces along the guideway
- 11 Greasing channels in the cover plate**
Enable bottom greasing via a central greasing system
- 12 Fitting screws available as an option**
For positioning the clamping device with high repetition precision

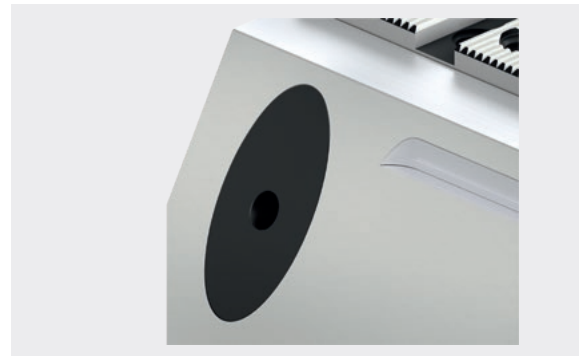
Chip-repellent design

The special design of the base jaw and cover strip prevents chips becoming permanently lodged. During the clamping process, the chips are pushed from the base jaw by the incline of the cover strip.



Cover plugs for the mounting screws

All four mounting screws are sealed with anodized aluminum plugs. Chip build-up is therefore completely eliminated in advance.



Alignment edge

An alignment edge is recessed into the side of the clamping force block. It extends parallel to the jaw guidance and enables an exact alignment of the vises to the machine table.



Coolant drainage holes

All clamping force blocks are equipped with two coolant drainage holes. That allows coolant that penetrates to be drained to the outside. The drainage holes are sealed with a sintered filter to prevent entry of chips.



Greasing system

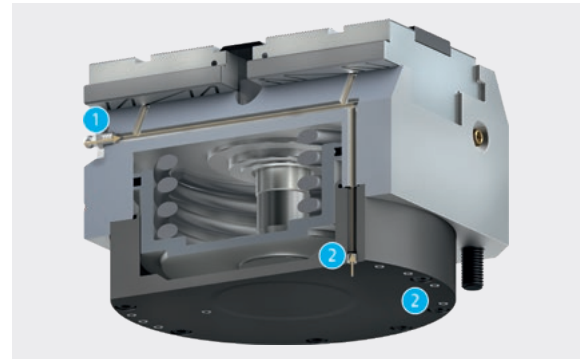
All clamping force blocks are equipped with a dual greasing system.

1 Manual lubrication

A grease gun is used to supply all friction surfaces (jaw guidance, piston guidance, and diagonal pull) evenly.

2 Central lubrication

The connections on the base side are used to supply all friction surfaces (jaw guidance, piston guidance and diagonal pull) evenly with grease. Several vises can be greased at the same time by means of the base plate.

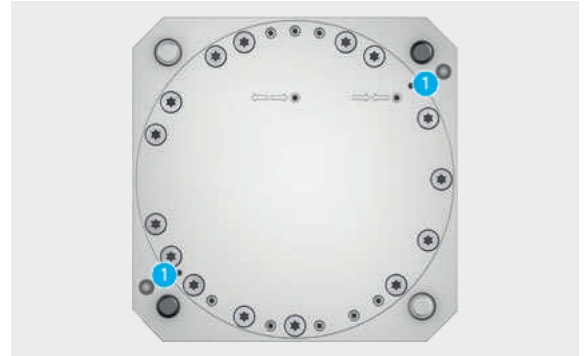


Standardized equipment versions

Jig-produced positioning bores (-Z)

In order to position several clamping force blocks very accurately, jig-produced positioning bores are integrated in the Z-version. The jig-produced positioning bores ensure a positioning accuracy of ± 0.01 mm to the clamp center when changing the clamping force block.

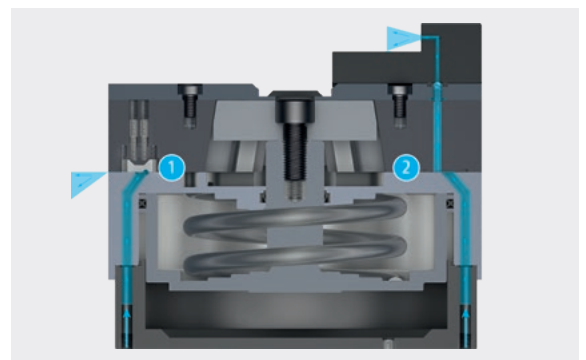
1 Positioning bore

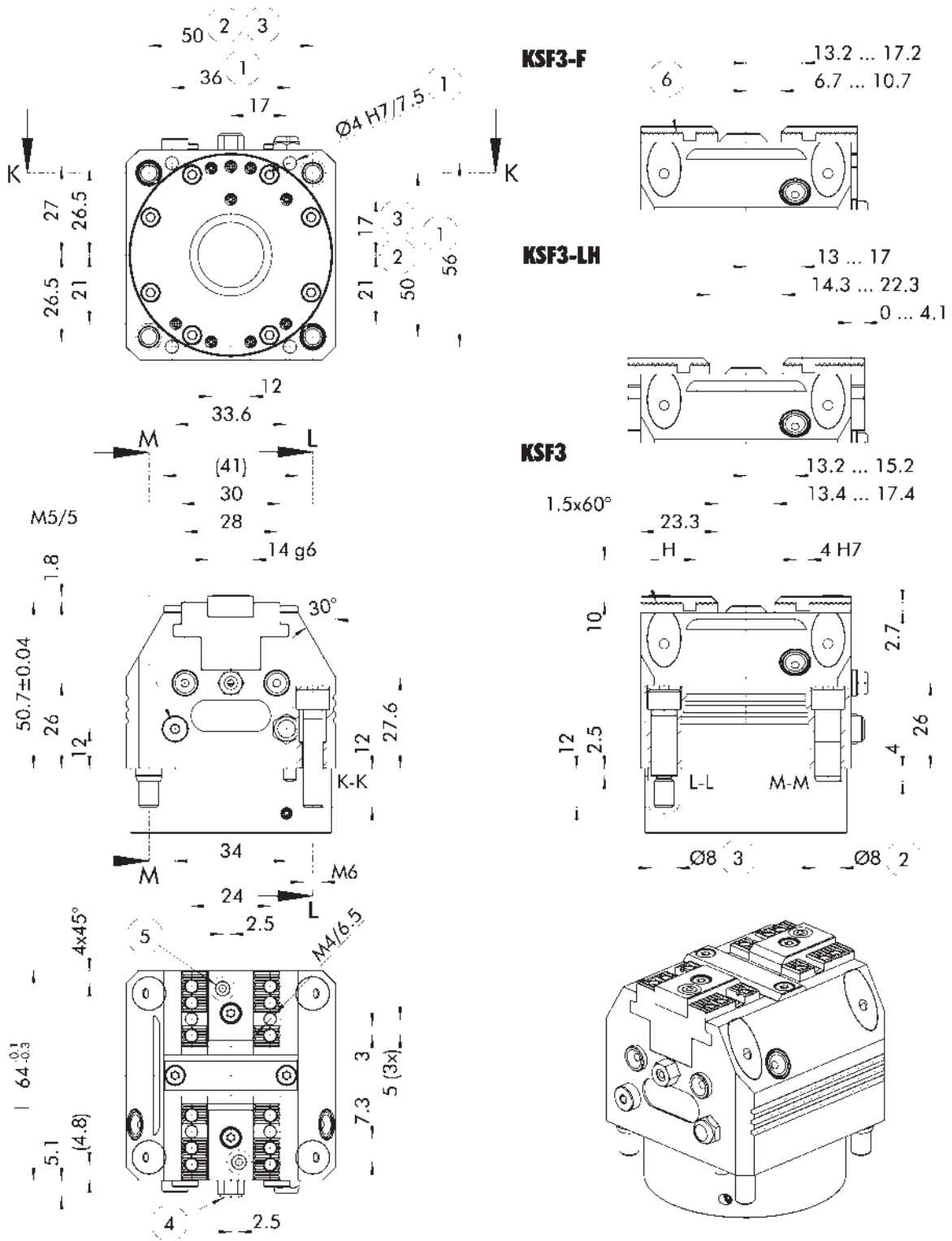


Pneumatic monitoring (-PM)

The PM version of the TANDEM3 generation includes several features. The base jaw positions can be queried via dynamic pressure. Transfer via the base jaw enables compressed air to be fed through into the system jaws. In this way, a workpiece presence control or cleaning of the clamping surfaces can be done by the customer.

- 1 Patented monitoring of the base jaw position via dynamic pressure
- 2 Air transfer to system jaw for workpiece system control





Subject to technical changes.

- ① Z-variant ±0.01 mm to clamping center
- ② Clamping sleeve ±0.04 mm to clamping center
- ③ Fitting screw ±0.02 mm to clamping center
- ④ Connection M5 for air purge
- ⑤ Air transfer in the system jaw for the workpiece presence control (see operating manual for top jaw dimensions)
- ⑥ Fixed jaw

Technical data

Description	ID	Jig-produced positioning bores	Pneumatic monitoring	Clamping force range [kN]	Clamping force range with turbo [kN]	Opening pressure [bar]	Max. turbo pressure [bar]
KSF3 64	1518520			2 - 2.5		6 - 9	
KSF3 64-Z	1518521	●		2 - 2.5		6 - 9	
KSF3 64-PM	1518522		●	2 - 2.5		6 - 9	
KSF3 64-Z-PM	1518531	●	●	2 - 2.5		6 - 9	
KSF3-LH 64	1518523			1 - 1.5	2.5 - 3	6 - 9	6
KSF3-LH 64-Z	1518532	●		1 - 1.5	2.5 - 3	6 - 9	6
KSF3-LH 64-PM	1518524		●	1 - 1.5	2.5 - 3	6 - 9	6
KSF3-LH 64-Z-PM	1518525	●	●	1 - 1.5	2.5 - 3	6 - 9	6
KSF3-F 64	1518526			2 - 2.5		6 - 9	
KSF3-F 64-Z	1518527	●		2 - 2.5		6 - 9	
KSF3-F 64-PM	1518529		●	2 - 2.5		6 - 9	
KSF3-F 64-Z-PM	1518530	●	●	2 - 2.5		6 - 9	

• For a detailed description of the equipment versions listed above, see page 6.

Scope of delivery

Clamping force block, mounting screws for system jaws and clamping force block, cover plugs, fitting screws, clamping sleeves, operating manual

Notes

Definition clamping force

Clamping force is the arithmetic sum of the individual forces occurring at the chuck jaws at distance "H".

Definition of the clamping force range

The clamping force depends on the stroke due to the spring tension.

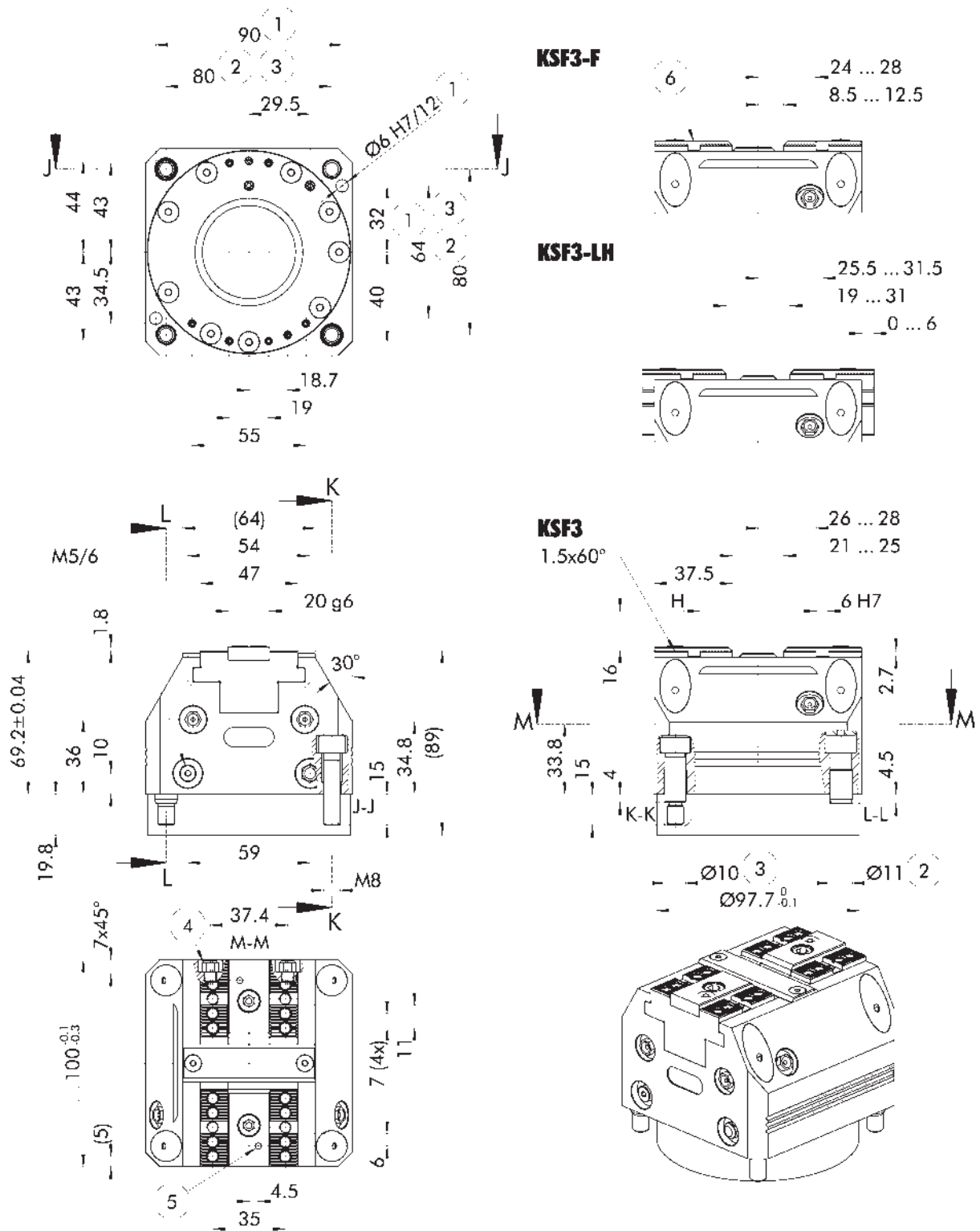
Max. clamping force is reached in the "open" condition, min. clamping force in the "closed" condition.

General note

The specifications exclusively refer to the grease LP 410 used by SCHUNK.

Further technical data

Description	Stroke version	Stroke per jaw [mm]	Max. jaw height [mm]	Repeat accuracy [mm]	Air consumption per stroke at 6 bar [cm³]	Closing/opening time [s]	Weight [kg]
KSF3 64 ...	Standard stroke	2	60	0.01	110	0.1	1.5
KSF3-LH 64 ...	Long stroke (-LH)	4	120	0.01	110	0.1	1.5
KSF3-F 64 ...	With fixed jaw (-F)	4	60	0.01	110	0.1	1.5



Subject to technical changes.

- ① Z-variant ± 0.01 mm to clamping center
- ② Clamping sleeve ± 0.04 mm to clamping center
- ③ Fitting screw ± 0.02 mm to clamping center
- ④ Connection M5 for air purge
- ⑤ Air transfer in the system jaw for the workpiece presence control (see operating manual for top jaw dimensions)
- ⑥ Fixed jaw

Technical data

Description	ID	Jig-produced positioning bores	Pneumatic monitoring	Clamping force range [kN]	Clamping force range with turbo [kN]	Opening pressure [bar]	Max. turbo pressure [bar]
KSF3 100	1457382			7 - 12		6 - 9	
KSF3 100-Z	1457345	●		7 - 12		6 - 9	
KSF3 100-PM	1448288		●	7 - 12		6 - 9	
KSF3 100-Z-PM	1457346	●	●	7 - 12		6 - 9	
KSF3-LH 100	1457347			3 - 5	9 - 11	6 - 9	6
KSF3-LH 100-Z	1457348	●		3 - 5	9 - 11	6 - 9	6
KSF3-LH 100-PM	1448289		●	3 - 5	9 - 11	6 - 9	6
KSF3-LH 100-Z-PM	1457349	●	●	3 - 5	9 - 11	6 - 9	6
KSF3-F 100	1457390			7 - 12		6 - 9	
KSF3-F 100-Z	1457391	●		7 - 12		6 - 9	
KSF3-F 100-PM	1448290		●	7 - 12		6 - 9	
KSF3-F 100-Z-PM	1457392	●	●	7 - 12		6 - 9	

• For a detailed description of the equipment versions listed above, see page 6.

Scope of delivery

Clamping force block, mounting screws for system jaws and clamping force block, cover plugs, fitting screws, clamping sleeves, operating manual

Notes

Definition clamping force

Clamping force is the arithmetic sum of the individual forces occurring at the chuck jaws at distance "H".

Definition of the clamping force range

The clamping force depends on the stroke due to the spring tension.

Max. clamping force is reached in the "open" condition, min. clamping force in the "closed" condition.

General note

The specifications exclusively refer to the grease LP 410 used by SCHUNK.

Further technical data

Description	Stroke version	Stroke per jaw [mm]	Max. jaw height [mm]	Repeat accuracy [mm]	Air consumption per stroke at 6 bar [cm ³]	Closing/opening time [s]	Weight [kg]
KSF3 100 ...	Standard stroke	2	60	0.01	500	0.2	4.5
KSF3-LH 100 ...	Long stroke (-LH)	6	150	0.01	500	0.2	4.5
KSF3-F 100 ...	With fixed jaw (-F)	4	60	0.01	500	0.2	4.5

Technical data

Description	ID	Jig-produced positioning bores	Pneumatic monitoring	Clamping force range [kN]	Clamping force range with turbo [kN]	Opening pressure [bar]	Max. turbo pressure [bar]
KSF3 140	1514305			13.5 - 18.5		6 - 9	
KSF3 140-Z	1514306	●		13.5 - 18.5		6 - 9	
KSF3 140-PM	1514307		●	13.5 - 18.5		6 - 9	
KSF3 140-Z-PM	1514308	●	●	13.5 - 18.5		6 - 9	
KSF3-LH 140	1514309			6.5 - 9	16.5 - 24	6 - 9	6
KSF3-LH 140-Z	1514320	●		6.5 - 9	16.5 - 24	6 - 9	6
KSF3-LH 140-PM	1514321		●	6.5 - 9	16.5 - 24	6 - 9	6
KSF3-LH 140-Z-PM	1514322	●	●	6.5 - 9	16.5 - 24	6 - 9	6
KSF3-F 140	1514323			13.5 - 18.5		6 - 9	
KSF3-F 140-Z	1514324	●		13.5 - 18.5		6 - 9	
KSF3-F 140-PM	1514325		●	13.5 - 18.5		6 - 9	
KSF3-F 140-Z-PM	1514326	●	●	13.5 - 18.5		6 - 9	

• For a detailed description of the equipment versions listed above, see page 6.

Scope of delivery

Clamping force block, mounting screws for system jaws and clamping force block, cover plugs, fitting screws, clamping sleeves, operating manual

Notes

Definition clamping force

Clamping force is the arithmetic sum of the individual forces occurring at the chuck jaws at distance "H".

Definition of the clamping force range

The clamping force depends on the stroke due to the spring tension.

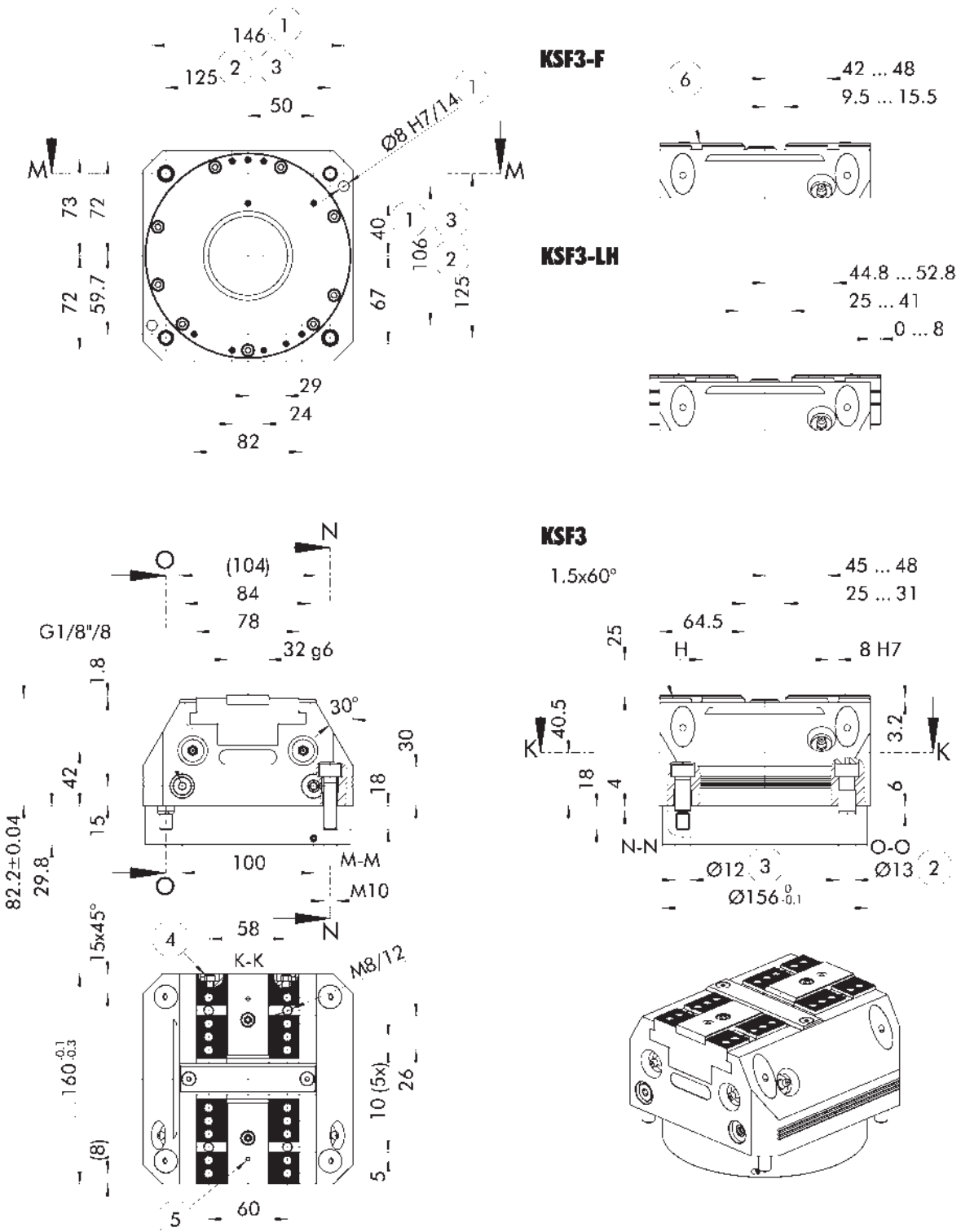
Max. clamping force is reached in the "open" condition, min. clamping force in the "closed" condition.

General note

The specifications exclusively refer to the grease LP 410 used by SCHUNK.

Further technical data

Description	Stroke version	Stroke per jaw [mm]	Max. jaw height [mm]	Repeat accuracy [mm]	Air consumption per stroke at 6 bar [cm³]	Closing/opening time [s]	Weight [kg]
KSF3 140 ...	Standard stroke	3	60	0.01	1150	0.6	8.1
KSF3-LH 140 ...	Long stroke (-LH)	7	120	0.01	1150	0.6	8.1
KSF3-F 140 ...	With fixed jaw (-F)	6	60	0.01	1150	0.6	8.1



Subject to technical changes.

- ① Z-variant ±0.01 mm to clamping center
- ② Clamping sleeve ±0.04 mm to clamping center
- ③ Fitting screw ±0.02 mm to clamping center
- ④ Connection M5 for air purge
- ⑤ Air transfer in the system jaw for the workpiece presence control (see operating manual for top jaw dimensions)
- ⑥ Fixed jaw

Technical data

Description	ID	Jig-produced positioning bores	Pneumatic monitoring	Clamping force range [kN]	Clamping force range with turbo [kN]	Opening pressure [bar]	Max. turbo pressure [bar]
KSF3 160	1457388			20 - 30		6 - 9	
KSF3 160-Z	1457389	●		20 - 30		6 - 9	
KSF3 160-PM	1448302		●	20 - 30		6 - 9	
KSF3 160-Z-PM	1457400	●	●	20 - 30		6 - 9	
KSF3-LH 160	1457402			10 - 15	29 - 34	6 - 9	6
KSF3-LH 160-Z	1457403	●		10 - 15	29 - 34	6 - 9	6
KSF3-LH 160-PM	1448304		●	10 - 15	29 - 34	6 - 9	6
KSF3-LH 160-Z-PM	1457405	●	●	10 - 15	29 - 34	6 - 9	6
KSF3-F 160	1457406			20 - 30		6 - 9	
KSF3-F 160-Z	1457407	●		20 - 30		6 - 9	
KSF3-F 160-PM	1448305		●	20 - 30		6 - 9	
KSF3-F 160-Z-PM	1457413	●	●	20 - 30		6 - 9	

• For a detailed description of the equipment versions listed above, see page 6.

Scope of delivery

Clamping force block, mounting screws for system jaws and clamping force block, cover plugs, fitting screws, clamping sleeves, operating manual

Notes

Definition clamping force

Clamping force is the arithmetic sum of the individual forces occurring at the chuck jaws at distance "H".

Definition of the clamping force range

The clamping force depends on the stroke due to the spring tension.

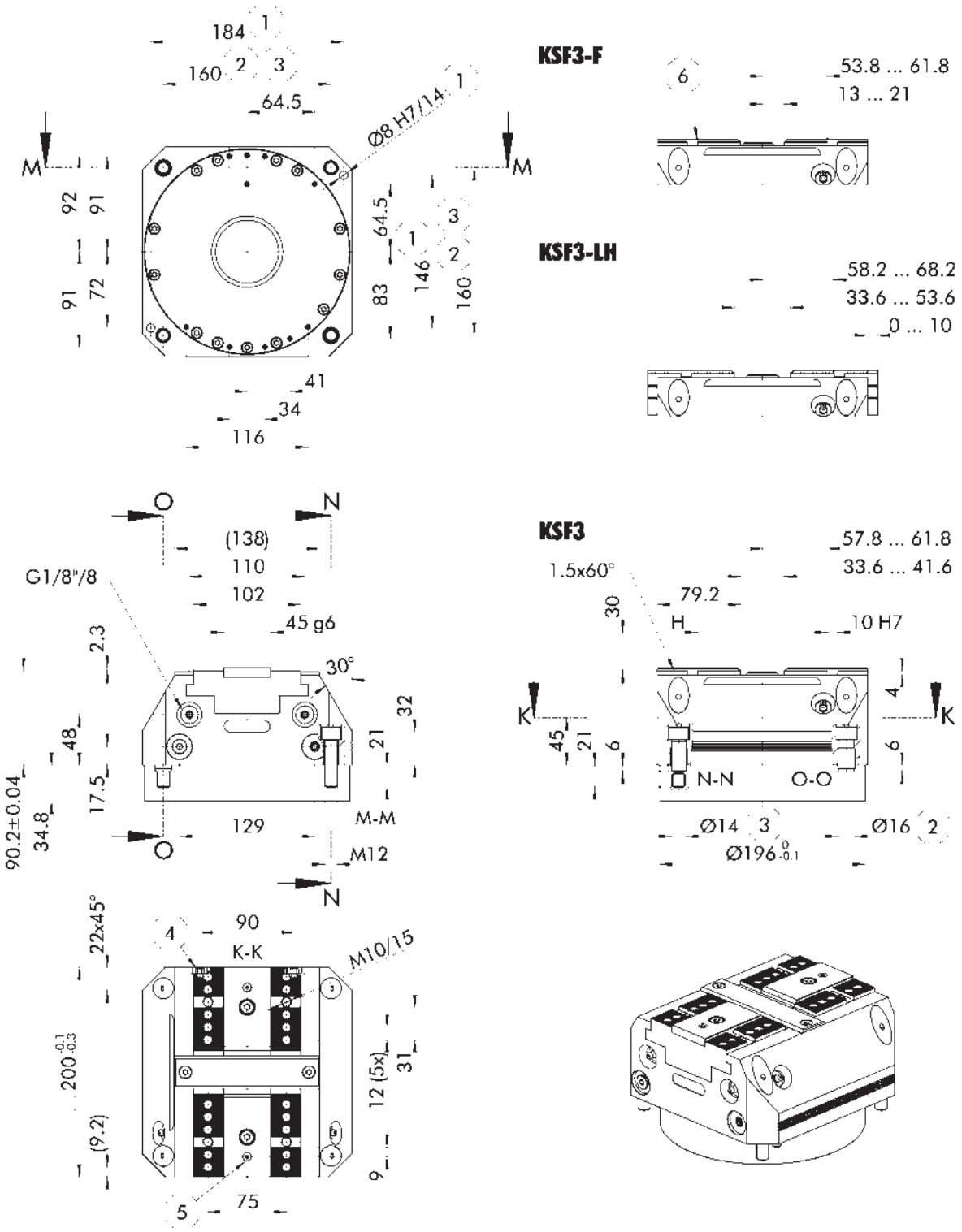
Max. clamping force is reached in the "open" condition, min. clamping force in the "closed" condition.

General note

The specifications exclusively refer to the grease LP 410 used by SCHUNK.

Further technical data

Description	Stroke version	Stroke per jaw [mm]	Max. jaw height [mm]	Repeat accuracy [mm]	Air consumption per stroke at 6 bar [cm³]	Closing/opening time [s]	Weight [kg]
KSF3 160 ...	Standard stroke	3	60	0.01	1700	0.8	13
KSF3-LH 160 ...	Long stroke (-LH)	8	200	0.01	1700	0.8	13
KSF3-F 160 ...	With fixed jaw (-F)	6	60	0.01	1700	0.8	13



Subject to technical changes.

- ① Z-variant ±0.01 mm to clamping center
- ② Clamping sleeve ±0.04 mm to clamping center
- ③ Fitting screw ±0.02 mm to clamping center
- ④ Connection M5 for air purge
- ⑤ Air transfer in the system jaw for the workpiece presence control (see operating manual for top jaw dimensions)
- ⑥ Fixed jaw

Technical data

Description	ID	Jig-produced positioning bores	Pneumatic monitoring	Clamping force range [kN]	Clamping force range with turbo [kN]	Opening pressure [bar]	Max. turbo pressure [bar]
KSF3 200	1514328			26 - 35		6 - 9	
KSF3 200-Z	1514329	●		26 - 35		6 - 9	
KSF3 200-PM	1514330		●	26 - 35		6 - 9	
KSF3 200-Z-PM	1514331	●	●	26 - 35		6 - 9	
KSF3-LH 200	1514332			12 - 17	31 - 36	6 - 9	6
KSF3-LH 200-Z	1514333	●		12 - 17	31 - 36	6 - 9	6
KSF3-LH 200-PM	1514334		●	12 - 17	31 - 36	6 - 9	6
KSF3-LH 200-Z-PM	1514335	●	●	12 - 17	31 - 36	6 - 9	6
KSF3-F 200	1514336			26 - 35		6 - 9	
KSF3-F 200-Z	1514337	●		26 - 35		6 - 9	
KSF3-F 200-PM	1514338		●	26 - 35		6 - 9	
KSF3-F 200-Z-PM	1514339	●	●	26 - 35		6 - 9	

• For a detailed description of the equipment versions listed above, see page 6.

Scope of delivery

Clamping force block, mounting screws for system jaws and clamping force block, cover plugs, fitting screws, clamping sleeves, operating manual

Notes

Definition clamping force

Clamping force is the arithmetic sum of the individual forces occurring at the chuck jaws at distance "H".

Definition of the clamping force range

The clamping force depends on the stroke due to the spring tension.

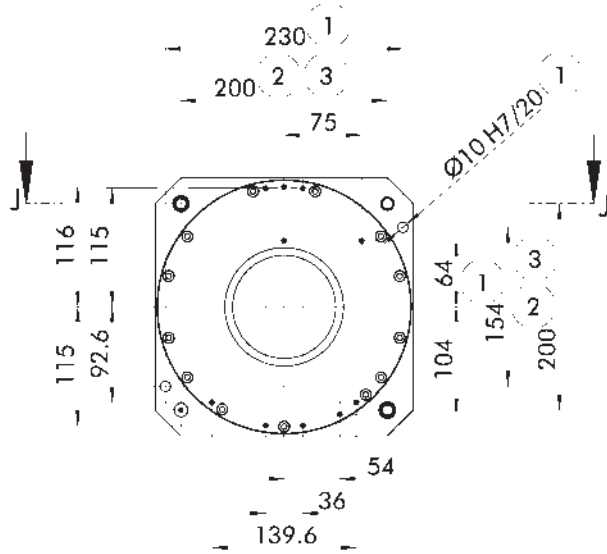
Max. clamping force is reached in the "open" condition, min. clamping force in the "closed" condition.

General note

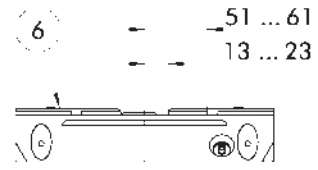
The specifications exclusively refer to the grease LP 410 used by SCHUNK.

Further technical data

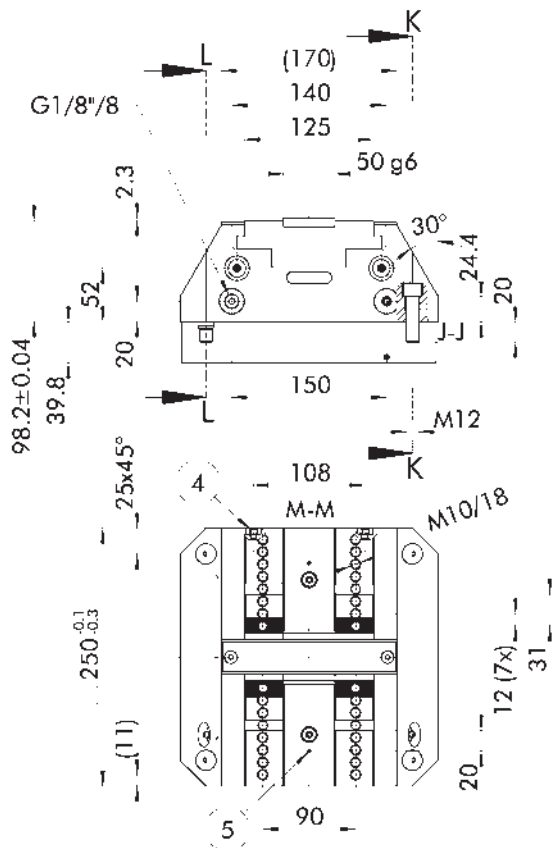
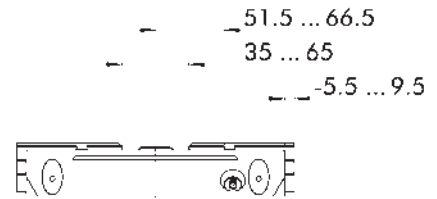
Description	Stroke version	Stroke per jaw [mm]	Max. jaw height [mm]	Repeat accuracy [mm]	Air consumption per stroke at 6 bar [cm³]	Closing/opening time [s]	Weight [kg]
KSF3 200 ...	Standard stroke	4	100	0.02	2550	1.2	24
KSF3-LH 200 ...	Long stroke (-LH)	10	200	0.02	2550	1.2	24
KSF3-F 200 ...	With fixed jaw (-F)	8	100	0.01	2550	1.2	24



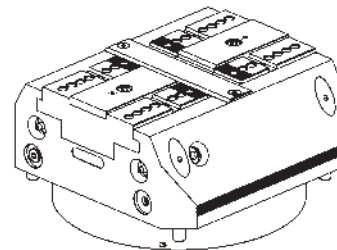
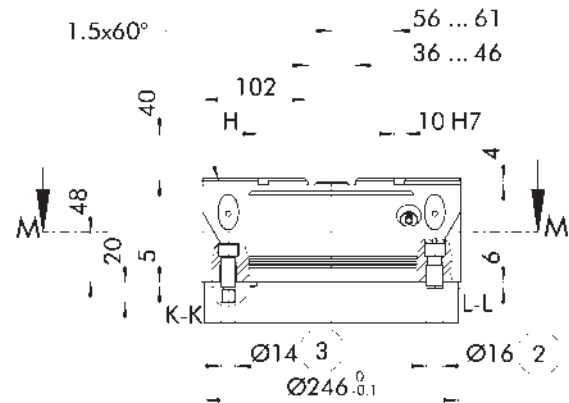
KSF3-F



KSF3-LH



KSF3



Subject to technical changes.

- ① Z-variant ±0.01 mm to clamping center
- ② Clamping sleeve ±0.04 mm to clamping center
- ③ Fitting screw ±0.02 mm to clamping center
- ④ Connection M5 for air purge
- ⑤ Air transfer in the system jaw for the workpiece presence control (see operating manual for top jaw dimensions)
- ⑥ Fixed jaw

Technical data

Description	ID	Jig-produced positioning bores	Pneumatic monitoring	Clamping force range [kN]	Clamping force range with turbo [kN]	Opening pressure [bar]	Max. turbo pressure [bar]
KSF3 250	1457393			37 - 50		6 - 9	
KSF3 250-Z	1457394	●		37 - 50		6 - 9	
KSF3 250-PM	1448298		●	37 - 50		6 - 9	
KSF3 250-Z-PM	1457395	●	●	37 - 50		6 - 9	
KSF3-LH 250	1457396			15 - 21	40 - 46	6 - 9	6
KSF3-LH 250-Z	1457397	●		15 - 21	40 - 46	6 - 9	6
KSF3-LH 250-PM	1448295		●	15 - 21	40 - 46	6 - 9	6
KSF3-LH 250-Z-PM	1457398	●	●	15 - 21	40 - 46	6 - 9	6
KSF3-F 250	1457430			37 - 50		6 - 9	
KSF3-F 250-Z	1457399	●		37 - 50		6 - 9	
KSF3-F 250-PM	1448297		●	37 - 50		6 - 9	
KSF3-F 250-Z-PM	1460101	●	●	37 - 50		6 - 9	

• For a detailed description of the equipment versions listed above, see page 6.

Scope of delivery

Clamping force block, mounting screws for system jaws and clamping force block, cover plugs, fitting screws, clamping sleeves, operating manual

Notes

Definition clamping force

Clamping force is the arithmetic sum of the individual forces occurring at the chuck jaws at distance "H".

Definition of the clamping force range

The clamping force depends on the stroke due to the spring tension.

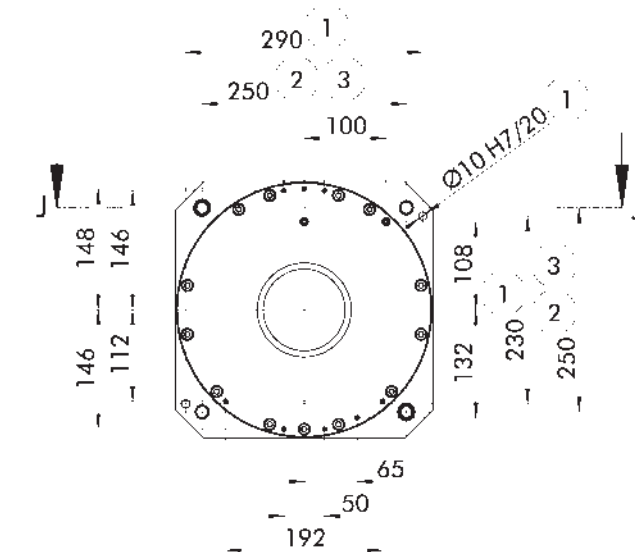
Max. clamping force is reached in the "open" condition, min. clamping force in the "closed" condition.

General note

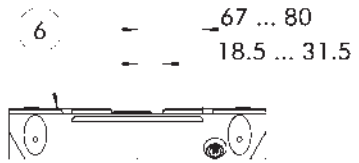
The specifications exclusively refer to the grease LP 410 used by SCHUNK.

Further technical data

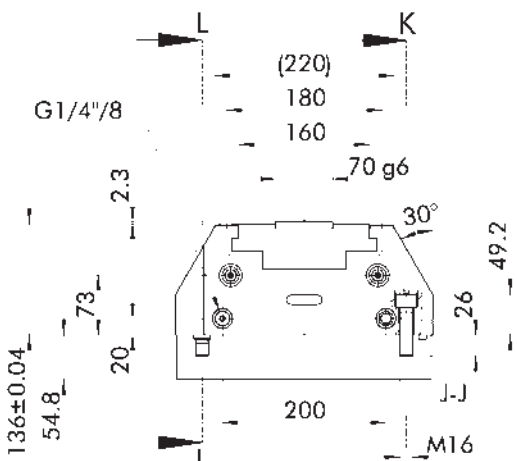
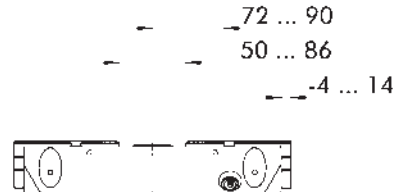
Description	Stroke version	Stroke per jaw [mm]	Max. jaw height [mm]	Repeat accuracy [mm]	Air consumption per stroke at 6 bar [cm³]	Closing/opening time [s]	Weight [kg]
KSF3 250 ...	Standard stroke	5	150	0.02	4600	1.5	40
KSF3-LH 250 ...	Long stroke (-LH)	15	500	0.02	4600	1.5	40
KSF3-F 250 ...	With fixed jaw (-F)	10	150	0.01	4600	1.5	40



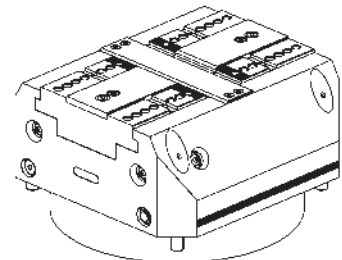
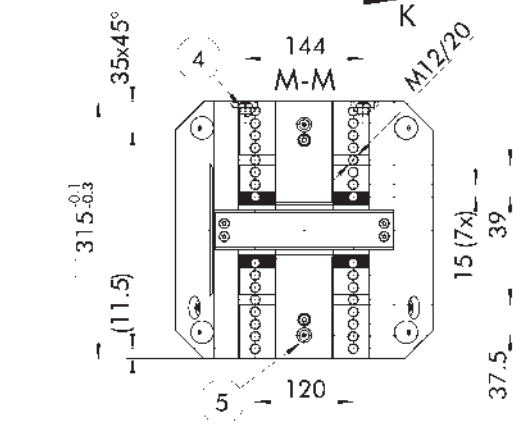
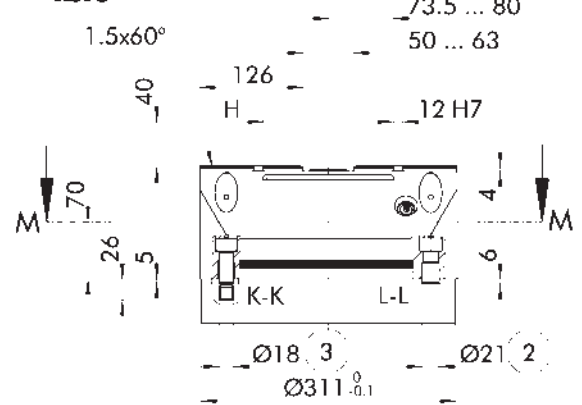
KSF3-F



KSF3-LH



KSF3



Subject to technical changes.

- ① Z-variant ±0.01 mm to clamping center
- ② Clamping sleeve ±0.04 mm to clamping center
- ③ Fitting screw ±0.02 mm to clamping center
- ④ Connection M5 for air purge
- ⑤ Air transfer in the system jaw for the workpiece presence control (see operating manual for top jaw dimensions)
- ⑥ Fixed jaw

Technical data

Description	ID	Jig-produced positioning bores	Pneumatic monitoring	Clamping force range [kN]	Clamping force range with turbo [kN]	Opening pressure [bar]	Max. turbo pressure [bar]
KSF3 315	1514340			69 - 95		6 - 9	
KSF3 315-Z	1514341	●		69 - 95		6 - 9	
KSF3 315-PM	1514342		●	69 - 95		6 - 9	
KSF3 315-Z-PM	1514343	●	●	69 - 95		6 - 9	
KSF3-LH 315	1514344			27 - 37	67 - 77	6 - 9	6
KSF3-LH 315-Z	1514345	●		27 - 37	67 - 77	6 - 9	6
KSF3-LH 315-PM	1514346		●	27 - 37	67 - 77	6 - 9	6
KSF3-LH 315-Z-PM	1514347	●	●	27 - 37	67 - 77	6 - 9	6
KSF3-F 315	1514348			69 - 95		6 - 9	
KSF3-F 315-Z	1514349	●		69 - 95		6 - 9	
KSF3-F 315-PM	1514350		●	69 - 95		6 - 9	
KSF3-F 315-Z-PM	1514351	●	●	69 - 95		6 - 9	

• For a detailed description of the equipment versions listed above, see page 6.

Scope of delivery

Clamping force block, mounting screws for system jaws and clamping force block, cover plugs, fitting screws, clamping sleeves, operating manual

Notes

Definition clamping force

Clamping force is the arithmetic sum of the individual forces occurring at the chuck jaws at distance "H".

Definition of the clamping force range

The clamping force depends on the stroke due to the spring tension.

Max. clamping force is reached in the "open" condition, min. clamping force in the "closed" condition.

General note

The specifications exclusively refer to the grease LP 410 used by SCHUNK.

Further technical data

Description	Stroke version	Stroke per jaw [mm]	Max. jaw height [mm]	Repeat accuracy [mm]	Air consumption per stroke at 6 bar [cm ³]	Closing/opening time [s]	Weight [kg]
KSF3 315 ...	Standard stroke	6.5	200	0.02	10750	2	86
KSF3-LH 315 ...	Long stroke (-LH)	18	500	0.02	10750	2	86
KSF3-F 315 ...	With fixed jaw (-F)	13	200	0.01	10750	2	86

System jaws

Supporting jaw TBA-D

Reversible supporting jaws with fine serration for mounting standard top jaws from SCHUNK.



Suitable for	Description	Interface	ID
KSF3 100	TBA-D 100	W-65-1	0402294
		W-90-1	
KSF3 140	TBA-D 140	W-100-1	1349715
KSF3 160	TBA-D 160	W-100-1	0402295
KSF3 200	TBA-D 200	W-100-1	1498197
KSF3 250	TBA-D 250	W-125-1	0402296
KSF3 315	TBA-D 315	W-160	1498198

3-axis jaw grip S3A-G5

With grip step, 5 mm.
For embossed clamping of unhardened materials up to 22 HRC.



Suitable for	Description	ID
KSF3 64	S3A-G5 64	1471165
KSF3 100	S3A-G5 100	1471166
KSF3 140	S3A-G5 140	1471167
KSF3 160	S3A-G5 160	1471168
KSF3 200	S3A-G5 200	1471186
KSF3 250	S3A-G5 250	1471187
KSF3 315	S3A-G5 315	1471188

5-axis jaw grip S5A-G5

With grip step, 5 mm.
For embossed clamping of unhardened materials up to 22 HRC.



Suitable for	Description	ID
KSF3 64	S5A-G5 64	1471189
KSF3 100	S5A-G5 100	1471190
KSF3 140	S5A-G5 140	1471197
KSF3 160	S5A-G5 160	1471198
KSF3 200	S5A-G5 200	1471199
KSF3 250	S5A-G5 250	1471200
KSF3 315	S5A-G5 315	1471201

Top jaw blank STR

Top jaw blanks with fine serration for customer rework.



Suitable for	Description	ID
KSF3 64	STR 64	0402100
KSF3 100	STR 100	0402101
KSF3 140	STR 140	1349709
KSF3 160	STR 160	0402102
KSF3 200	STR 200	1446894
KSF3 250	STR 250	0402103
KSF3 315	STR 315	1446896

Top jaw blank STR-H

High top jaw blanks with fine serration for customer rework.



Suitable for	Description	ID
KSF3 64	STR-H 64	0402200
KSF3 100	STR-H 100	0402201
KSF3 160	STR-H 160	0402202
KSF3 200	STR-H 200	1446905
KSF3 250	STR-H 250	0402203
KSF3 315	STR-H 315	1446907

Top jaw blank KTR

Top jaw blanks with tongue and groove and preassembled mounting holes for customer rework.



Suitable for	Description	ID
KSF3 64	KTR 64	0402120
KSF3 100	KTR 100	0402121
KSF3 140	KTR 140	1349707
KSF3 160	KTR 160	0402122
KSF3 200	KTR 200	1446913
KSF3 250	KTR 250	0402123
KSF3 315	KTR 315	1446915

Top jaw blank KTR-H

High top jaw blanks with tongue and groove and preassembled mounting holes for customer rework.



Suitable for	Description	ID
KSF3 64	KTR-H 64	0402220
KSF3 100	KTR-H 100	0402221
KSF3 140	KTR-H 140	1349708
KSF3 160	KTR-H 160	0402222
KSF3 200	KTR-H 200	1446923
KSF3 250	KTR-H 250	0402223
KSF3 315	KTR-H 315	1446925

Top jaw blank STR-S

Top jaw blanks with fine serration and preassembled mounting groove for customer rework.

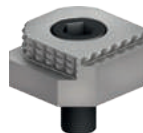


Suitable for	Description	ID
KSF3 64	STR-S 64	0402110
KSF3 100	STR-S 100	0402111
KSF3 140	STR-S 140	1349712
KSF3 160	STR-S 160	0402112
KSF3 200	STR-S 200	1446933
KSF3 250	STR-S 250	0402113
KSF3 315	STR-S 315	1446935

Top jaws

6-way reversal jaws

With five carbide grip steps as well as a coated clamping face.



Description	Width [mm]	Height [mm]	Depth [mm]	Interface	ID
GBG-6W 38-38-18	38.5	18	38.2	W-38	0430803

6-way reversal jaws

With five carbide grip steps as well as a smooth clamping face.



Description	Width [mm]	Height [mm]	Depth [mm]	Interface	ID
GBCG-6W 38-38-18	38.5	18	38.2	W-38	1395550

Swivel plate

Used – in combination with adapter plates and 6-way reversal jaws – to clamp bulky workpieces.



Suitable for	Description	Interface	ID
KSF3 160	KTP 160	W-38	1580334

Adapter plate

Used – in combination with swivel plates and 6-way reversal jaws – to clamp bulky workpieces.



Suitable for	Description	Interface	ID
KSF3 160	KTA 160	W-38	1580335

Jaw profiled

For increasing the friction between jaw and workpiece without clamping impressions.



Description	Width [mm]	Height [mm]	Depth [mm]	Interface	ID
GBD 100-35-10	100	35	10	W-100-1	1373346
GBD 125-40-11.5	125	40	11.5	W-125-1	1373349
GBD 160-50-13.5	160	50	13.5	W-160	1373350

Soft jaw

Hardenable jaws for rework at the customer site, e.g. for incorporating contours or special shapes.



Description	Width [mm]	Height [mm]	Depth [mm]	Interface	ID
GBW 100-35-16	100	35	16	W-100-1	1373287
GBW 125-40-20	125	40	20	W-125-1	1373288
GBW 160-50-20	160	50	20	W-160	1373289

Stepped jaw

With ground step, 8 mm.



Description	Width [mm]	Height [mm]	Depth [mm]	Interface	ID
GBS 100-35-10-5	100	35	10	W-100-1	1373325
GBS 125-40-11.5-8	125	40	11.5	W-125-1	1373327
GBS 160-50-13.5-8	160	50	13.5	W-160	1373328

Stepped jaw

With ground step, 17 mm.



Description	Width [mm]	Height [mm]	Depth [mm]	Interface	ID
GBS 125-40-11.5-17	125	40	11.5	W-125-1	0430413

Stepped jaw

With coated step, 5 mm.



Description	Width [mm]	Height [mm]	Depth [mm]	Interface	ID
GBS-W 100-35-10-5	100	35	10	W-100-1	1395510
GBS-W 125-40-11.5-5	125	40	11.5	W-125-1	0430414
GBS-W 160-50-13.5-5	160	50	13.5	W-160	1395511

Stepped jaw

With grip step 3 mm and ground step 18 mm.



Description	Width [mm]	Height [mm]	Depth [mm]	Interface	ID
GBS-G3 125-40-21.5-18	125	40	21.5	W-125-1	0430415
GBS-G3 125-40-24-18	125	40	24	W-125-1	1322989

Stepped jaw

With special "soft" grip step, 5 mm. For embossed clamping of soft materials such as plastic or aluminum.



Description	Width [mm]	Height [mm]	Depth [mm]	Interface	ID
GBS-SG5 125-40-11.5	125	40	11.5	W-125-1	1393552

Stepped jaw

With grip step, 3 mm. For embossed clamping of unhardened materials up to 22 HRC.



Description	Width [mm]	Height [mm]	Depth [mm]	Interface	ID
GBS-G3 100-35-10	100	35	10	W-100-1	1373330
GBS-G3 125-40-11.5	125	40	11.5	W-125-1	1373331
GBS-G3 160-50-13.5	160	50	13.5	W-160	1373332

Stepped jaw

With grip step, 5 mm. For embossed clamping of unhardened materials up to 22 HRC.



Description	Width [mm]	Height [mm]	Depth [mm]	Interface	ID
GBS-G5 65-22-8	65	22	8	W-65-1	1465122
GBS-G5 100-35-10	100	35	10	W-100-1	1373333
GBS-G5 125-40-11.5	125	40	11.5	W-125-1	1373334
GBS-G5 160-50-13.5	160	50	13.5	W-160	1373335

Stepped jaw

With grip step, 8 mm. For embossed clamping of unhardened materials up to 22 HRC.



Description	Width [mm]	Height [mm]	Depth [mm]	Interface	ID
GBS-G8 100-35-10	100	35	10	W-100-1	1373337
GBS-G8 125-40-11.5	125	40	11.5	W-125-1	1373338

Stepped jaw

With carbide grip step, 3 mm. For embossed clamping of hardened materials up to 58 HRC.



Description	Width [mm]	Height [mm]	Depth [mm]	Interface	ID
GBS-CG3 100-35-10	100	35	10	W-100-1	1428440
GBS-CG3 125-40-11.5	125	40	11.5	W-125-1	1395524
GBS-CG3 160-50-13.5	160	50	13.5	W-160	1431232

Stepped jaw

With carbide grip step, 5 mm. For embossed clamping of hardened materials up to 58 HRC.



Description	Width [mm]	Height [mm]	Depth [mm]	Interface	ID
GBS-CG5 100-35-12	100	35	12	W-100-1	1428441
GBS-CG5 125-40-11.5	125	40	11.5	W-125-1	1424000
GBS-CG5 160-50-15.5	160	50	15.5	W-160	1431233

Stepped jaw

With special grip step, 3 mm.
For clamping pre-embossed materials and workpieces.



Description	Width [mm]	Height [mm]	Depth [mm]	Interface	ID
GBS-GL3 125-40-11.5	125	40	11.5	W-125-1	1395577

Stepped jaw with T-slot

With grip step, 3 mm.
T-slot for mounting the positioning strip.



Description	Width [mm]	Height [mm]	Depth [mm]	Interface	ID
GBS-G3-T 100-35-17.5	100	35	17.5	W-100-1	0430242
GBS-G3-T 125-40-17.5	125	40	17.5	W-125-1	0430248

Stepped jaw with T-slot

With grip step, 5 mm.
T-slot for mounting the positioning strip.



Description	Width [mm]	Height [mm]	Depth [mm]	Interface	ID
GBS-G5-T 100-35-17.5	100	35	17.5	W-100-1	0430241
GBS-G5-T 125-40-17.5	125	40	17.5	W-125-1	0430247
GBS-G5-T 160-50-20	160	50	20	W-160	0430250

Stepped jaw with T-slot

With grip step, 8 mm.
T-slot for mounting the positioning strip.



Description	Width [mm]	Height [mm]	Depth [mm]	Interface	ID
GBS-G8-T 100-35-17.5	100	35	17.5	W-100-1	0430240
GBS-G8-T 125-40-17.5	125	40	17.5	W-125-1	0430237
GBS-G8-T 160-50-20	160	50	20	W-160	0430249

Positioning bar

To suit all stepped jaws with T-slot.



Description	Width [mm]	Height [mm]	Depth [mm]	Interface	ID
GPL 100-32-13.5	100	32	13.5	W-100-1	0430246
GPL 125-32-13.5	125	32	13.5	W-125-1	0430238
GPL 160-32-13.5	160	32	13.5	W-160	0430251

Spring leaf pull-down jaw

For an active jaw pull-down function with a light clamping impression on the workpiece for more precise machining results.



Description	Width [mm]	Height [mm]	Depth [mm]	Interface	ID
GFA 100-35-10	100	35	10	W-100-1	1373301
GFA 125-40-11.5	125	40	11.5	W-125-1	1373304
GFA 160-50-13.5	160	50	13.5	W-160	1373306

Spring plate pull-down jaw

For an active jaw pull-down function without clamping impressions on the workpiece for more precise machining results.



Description	Width [mm]	Height [mm]	Depth [mm]	Interface	ID
GFB 100-34-10	100	34	10	W-100-1	0430191
GFB 125-39-10	125	39	10	W-125-1	0430192

Precision pull-down jaw

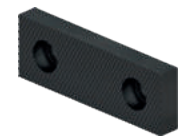
For an active jaw pull-down function without clamping impressions on the workpiece for more precise machining results.



Description	Width [mm]	Height [mm]	Depth [mm]	Interface	ID
GBN-P 100-35-25	100	35	25	W-100-1	0430146
GBN-P 125-40-25	125	40	25	W-125-1	0430147
GBN-P 160-50-27.5	160	50	27.5	W-160	0430148

Serrated jaw

For increasing the friction between jaw and workpiece with minimal clamping impressions.
Height = 22 mm.



Description	Width [mm]	Height [mm]	Depth [mm]	Interface	ID
GBC 90-35-11	90	35	11	W-90	0490569
GBC 65-22-8	64	22	8	W-65-1	0490565
GBC 100-35-11	100	35	11	W-100-1	1373267
GBC 125-40-12.5	125	40	12.5	W-125-1	1373268
GBC 160-50-14.4	160	50	14.4	W-160	1373269

Ground jaw

With a completely ground clamping face.
Height = 22 mm.



Description	Width [mm]	Height [mm]	Depth [mm]	Interface	ID
GBP 90-35-10	90	35	10	W-90	0490580
GBP 65-22-7.7	64	22	7.7	W-65-1	0490566
GBP 100-35-10	100	35	10	W-100-1	1373272
GBP 125-40-11.5	125	40	11.5	W-125-1	1373278
GBP 160-50-13.5	160	50	13.5	W-160	1373281

Soft jaw

Blanks for rework by the customer
Height = 22 mm.



Description	Width [mm]	Height [mm]	Depth [mm]	Interface	ID
GBW 90-35-16	90	35	16	W-90	0490570
GBW 65-22-20	64	22	20	W-65-1	0490567

Grip jaw

For embossed clamping of unhardened materials up to 22 HRC.
Height = 22 mm.



Description	Width [mm]	Height [mm]	Depth [mm]	Interface	ID
GBG 100-35-10	100	35	10	W-100-1	1373282
GBG 125-40-11.5	125	40	11.5	W-125-1	1373284
GBG 160-50-13.5	160	50	13.5	W-160	1373285
GBG 90-35-10	90	35	10	W-90	0490571
GBG 65-22-7.8	64	22	7.8	W-65-1	0430804

Reversible grip jaw

Reversible jaw with grip step 3 mm in vertical direction and 5 mm in horizontal direction.



Description	Width [mm]	Height [mm]	Depth [mm]	Interface	ID
GBG-W 65-22-8	65	22	8	W-65-1	0430729

Prism jaw, ground

For precise clamping of round workpieces.
Height = 22 mm.



Description	Width [mm]	Height [mm]	Depth [mm]	Interface	ID
GVA 100-35-15.5	100	35	15.5	W-100-1	1373342
GVA 125-40-17.5	125	40	17.5	W-125-1	1373344
GVA 160-50-19.5	160	50	19.5	W-160	1373345
GVA 65-22-15	65	22	15	W-65-1	0430707

Universal stepped jaw

Versatile stepped jaw with ground step.



Description	Width [mm]	Height [mm]	Depth [mm]	Interface	ID
GPE 65-22-8-3	65	22	8	W-65-1	0430704

Accessories**Clamping force tester**

For measuring the jaw clamping force of stationary clamping devices.



Suitable for	Description	ID
KSF3 64		
KSF3 100		
KSF3 140		
KSF3 160		
KSF3 200		
KSF3 250		
KSF3 315	IFT SST Set	1475766

Grease

LP 410

High-performance grease as standard for regularly lubricating SCHUNK TANDEM clamping force blocks.



Bundle	Description	ID
Cartridge	LP 410 cartridge	0184213

Grease gun

Auxiliary tools for lubrication of all kinds of SCHUNK products. The grease gun can be used for cartridges of all types of SCHUNK grease.



Bundle	Description	ID
Cartridge	Grease gun	9900543



**H.-D. SCHUNK GmbH & Co.
Spanntechnik KG**

Lothringer Str. 23
D-88512 Mengen
Tel. +49-7572-7614-1300
Fax +49-7572-7614-1039
CMM@de.schunk.com
schunk.com